



OK
OLIVER KNIGHTS
ARCHITECTURAL HARDWARE
2020 COLLECTION



THE GUILD OF MASTER CRAFTSMEN



Oliver Knights are proud to be members of 'The Guild of Master Craftsmen'. It is a great honour to have been invited to join such a prestigious group that demonstrates the skill, integrity and expertise of our superior quality British made collection.

All members of The Guild of Master Craftsmen are assessed to earn the right to obtain the title of master craftsmen. Thorough checks of our manufacturing, quality control and customer feedback procedures were all parts of the in-depth assessment. Oliver Knights are required to maintain The Guild's aims and objectives at all times.

The Guild of Master Craftsmen hosts some of the most prestigious British manufacturers such as Aston Martin, Rolls Royce, Burberrys to name a few. For more information please visit findacraftsman.com

Membership No. 127186

OLIVER KNIGHTS

ARCHITECTURAL HARDWARE



OUR STORY...

Oliver Knights is a family business stretching across three generations. We are well known for our manufacturing of superior quality Architectural Hardware. Combining the latest CNC Machinery and old school manufacturing techniques we offer our clients unrivalled British made products. Our entire collection is designed and manufactured in our workshop here in the heart of Birmingham, UK.

Our workshop was opened nearly half a century ago in 1972 and began supplying the aerospace, petrochemical and automotive industry. In 1995 we began laying the foundations of Oliver Knights and started supplying many well known names across the architectural industry, later founding the Oliver Knights Brand.

Over the years we have supplied our products all over the globe, growing an outstanding reputation for our attention to detail and offering our clients limitless capabilities. Oliver Knights pride itself on our superior quality products and our ability to offer our clients their exact specifications. We are strong believers in "The road to perfection, is endless"

We are proud of our history and long may it continue!



MANUFACTURED IN BIRMINGHAM, UK



THE OLIVER KNIGHTS COLLECTION IS MANUFACTURED FROM SOLID BRASS IN OUR
WORKSHOP IN BIRMINGHAM, UK...

OUR ENTIRE COLLECTION IS MADE TO ORDER FROM SOLID BRASS AND IS AVAILABLE IN ALL OF OUR HAND
FINISHES, ALONGSIDE A WIDE RANGE OF LEATHER, FABRIC & TIMBER APPLICATIONS THAT CAN BE
INCORPORATED INTO YOUR SPECIFICATION.

FOR MORE INFORMATION ON OUR BESPOKE SERVICES PLEASE SEE THE BACK OF THE BROCHURE FOR MORE
INFORMATION. OLIVER KNIGHTS HAS THE CAPABILITY TO OFFER OUR CLIENTS THE COMPLETE BESPOKE
SOLUTION TO ACHIEVE THEIR EXACT SPECIFICATION.



CONTENTS

LEVER HANDLES	P.6
DOOR KNOBS	P.16
EDGE PULLS & PAD HANDLES	P.26
CABINET HANDLES	P.30
CENTRE DOOR KNOB	P.44
FLUSH PULLS	P.46
PULL HANDLES	P.52
TURN & RELEASES	P.54
MISC., DOOR STOPS & ROBE HOOKS	P.62
FAMILIES	P.66
BACKPLATES	P.70
LEATHER, FABRIC & TIMBER	P.76
HAND FINISHES	P.78
BESPOKE	P.80



BALIN LH

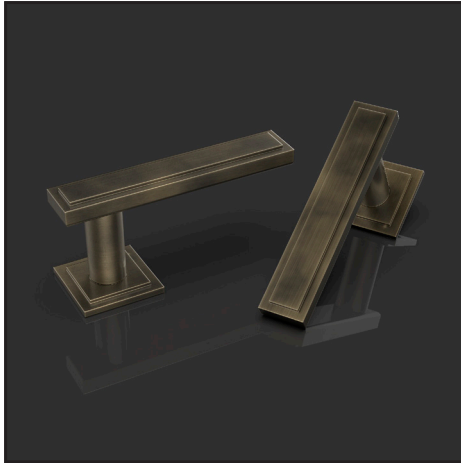
LEVER HANDLES



AMR LH
145X30X65MM



BAUSAN LH
150X25X60MM



ANTHONY LH
150X30X60MM



ARTHUR LH
170X25X71MM



BALIN LH
145X22X66MM
LEATHER/FABRIC OPTIONS AVAILABLE ON PAGE 76



BEATRICE LH
150X25X58MM



BENJAMIN LH
150X30X58MM

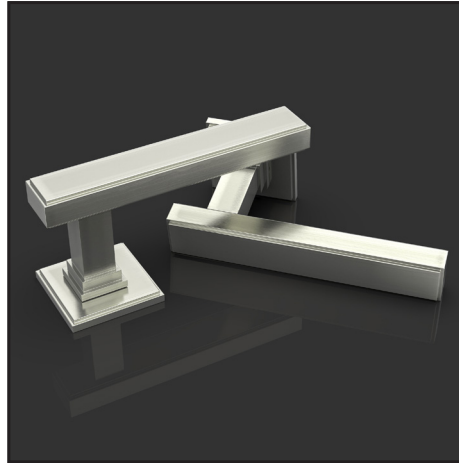


BETAN LH
155X25X60MM

LEVER HANDLES



BRASTIUS LH
155X25X60MM



BREUNOR LH
150X30X60MM



BOW LH
150X25X60MM



CASSIUS LH
153X25X59MM



CARLOS LH
151X25X60MM



CEDRIC LH
137X20X65MM



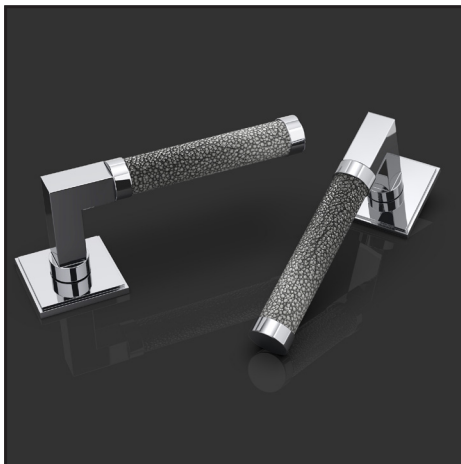
COURTOIS LH
150X22X63MM



DAIN LH
157X25X60MM



DRAKE LH
137X20X65MM



EV RAT LH
150X22X63MM
LEATHER/FABRIC OPTIONS AVAILABLE ON PAGE 76



FOLCARD LH
150X30X58MM



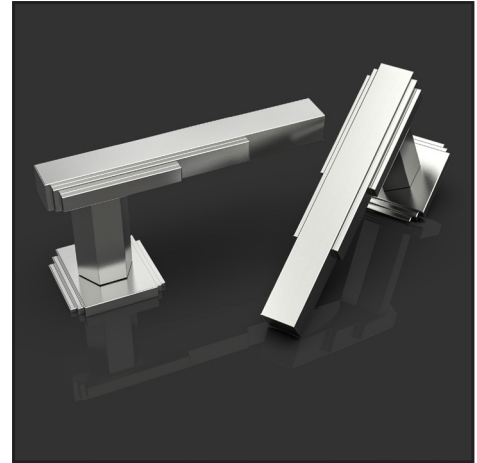
FLORENCE LH
140X35X55MM

NEW



INGLAIN LH

LEVER HANDLES



FREDERICK LH
145X30X64MM



HENRICUS LH
150X22X65MM



GINGLAIN LH
145X25X68MM



HARRIETTE LH
150X22X72MM



NEW

HARROGATE LH
153X25X59MM



HUTCH LH
150X30X58MM



INDUSTRIAL LH
145X36X65MM



LEO LH
165X25X56MM

LEVER HANDLES



LOT LH
143X30X58MM



LUCAN LH
140X22X64MM



MILLIE LH
145X25X68MM



ORIGIN LH
150X25X64MM



PEYTON LH
137X32X66MM



REN LH
153X25X59MM

ESTABLISHED 1972



REX LH
155X25X60MM



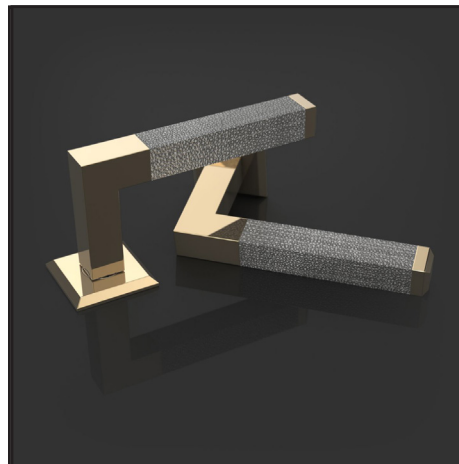
ROWAN LH
143X30X55MM



SAGRAMORE LH
153X25X59MM



SARAH LH
150X22X62MM



SHAGREEN LH
150X25X60MM
LEATHER/FABRIC OPTIONS AVAILABLE ON PAGE 76



SERLO LH
150X30X58MM

LEVER HANDLES



SIMON LH
156X30X57MM



TYBALT LH
144X22X60MM



VORTIMER LH
140X32X58MM

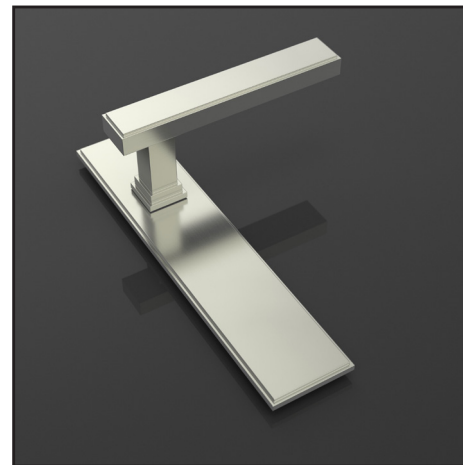
BACKPLATE INSPIRATION



ANTHONY LH BP
230X50MM BACKPLATE
COMPATIBLE WITH KEYHOLE, EU & T&R



VORTIMER LH BP
230X50MM BACKPLATE
COMPATIBLE WITH KEYHOLE, EU & T&R



BREUNOR LH BP
230X50MM BACKPLATE
COMPATIBLE WITH KEYHOLE, EU & T&R

ESTABLISHED 1972



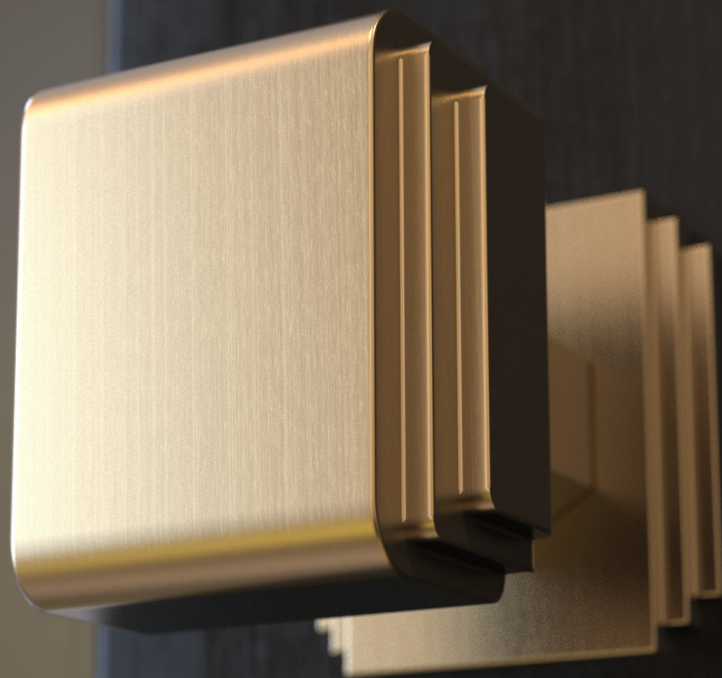
DAIN LH W/ LEATHER
155X25X60MM
LEATHER/FABRIC OPTIONS AVAILABLE ON PAGE 76



TYBALT LH BP
230X50MM BACKPLATE
COMPATIBLE WITH KEYHOLE, EU & T&R



SIMON LH

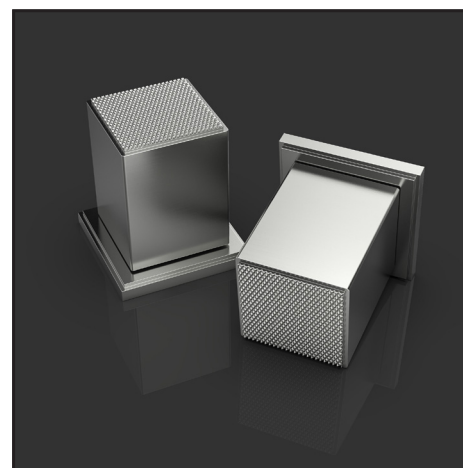


AMR DK

DOOR KNOBS



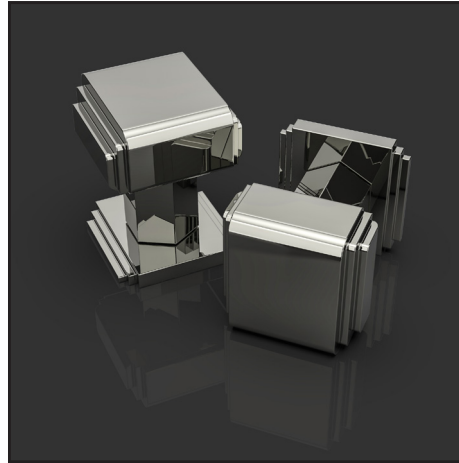
AGRAVAIN DK
51,54,57,62,65,70MM



BEATRICE DK
38MM



ALAN DK
51,54,57,62,65,70MM



AMR DK
50MM



ANTHONY DK
51,54,57,62,65,70MM



BEDIVERE DK
51,54,57,62,65,70MM



BENJAMIN DK
51,54,57,62,65,70MM



BOW DK
80MM

DOOR KNOBS



BRASTIUS DK
51,54,57,62,65,70MM



BREUNOR DK
51,54,57,62,65,70MM



CARLOS DK
51,54,57,62,65,70MM



CASSIUS DK
57,62,65,70MM



CHARLES DK
51,54,57,62,65,70MM



COURTOIS DK
51,54,57,62,65,70MM



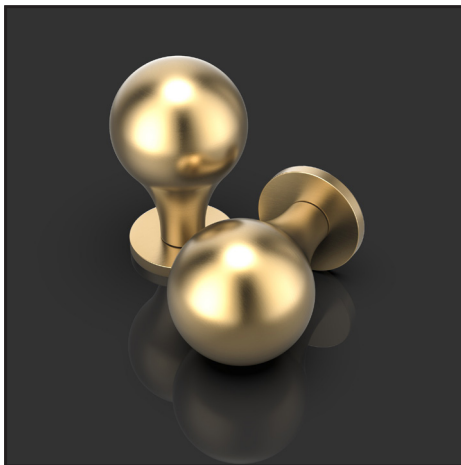
DAGONET DK
51,54,57,62,65,70MM



DRAKE DK
51,54,57,62,65,70MM



DUNCAN DK
51,54,57,62,65,70MM



DURNURE DK
51,54,57,62,65,70MM



FLORENCE DK
51,54,57,62,65,70MM

NEW



FOLCARD DK
51,54,57,62,65,70MM

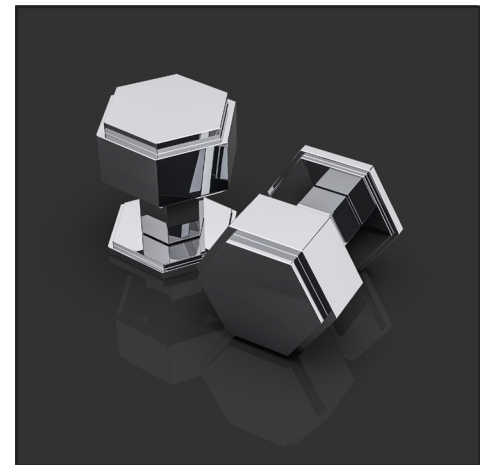


GINGLAIN DK

DOOR KNOBS



FRANCIS DK
51,54,57,62,65,70MM



HARRIETTE DK
50,62MM



GALESHIN DK
70MM



GINGLAIN DK
57,62,65,70MM

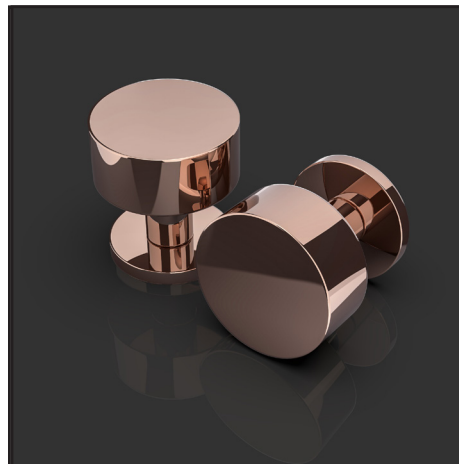


GODWIN DK
51,54,57,62,65,70MM



HARROGATE DK
51,54,57,62,65,70MM

NEW



HECTOR DK
51,54,57,62,65,70MM



HUTCH DK
51,54,57,62,65,70MM

DOOR KNOBS



INDUSTRIAL DK
51,54,57,62,65,70MM



JAMES DK
51,54,57,62,65,70MM



LANCELOT DK
51,54,57,62,65,70MM



MADOC DK
50,62MM



MERLIN DK
51,54,57,62,65,70MM



OCTAVIUS DK
51,54,57,62,65,70MM



ORIGIN DK
51,54,57,62,65,70MM



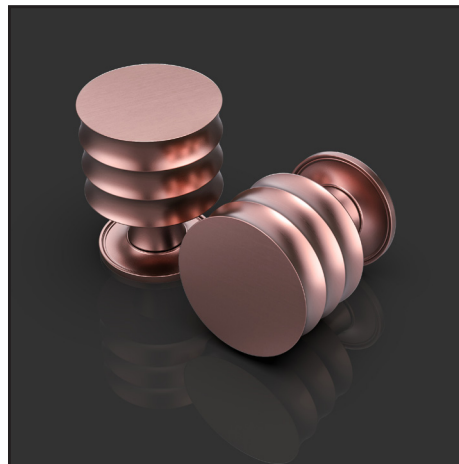
PERCIVAL DK
70MM



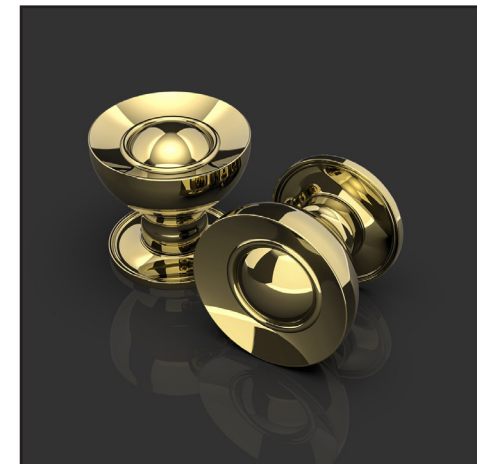
PHILLIP DK
51,54,57,62,65,70MM



REN DK
51,54,57,62,65,70MM



REX DK
51,54,57,62,65,70MM



ROBERT DK
51,54,57,62,65,70MM

DOOR KNOBS



SERLO DK
51,54,57,62,65,70MM



SIMON DK
57,62,65,70MM



SHAGREEN DK
51,54,57,62,65,70MM
LEATHER/FABRIC OPTIONS AVAILABLE ON PAGE 76

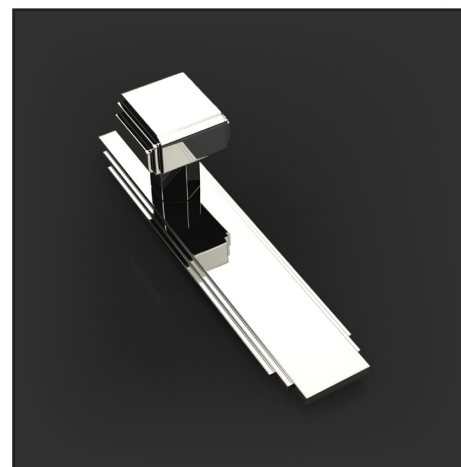


TOR DK
51,54,57,62,65,70MM



WARWICK DK
51,54,57,62,65,70MM

NEW



AMR DK BP
230X50MM BACKPLATE
COMPATIBLE WITH KEYHOLE, EU & T&R



TEGYR DK
51,54,57,62,65,70MM



TOR DK BP
230X50MM BACKPLATE
COMPATIBLE WITH KEYHOLE, EU & T&R



BREUNOR DK



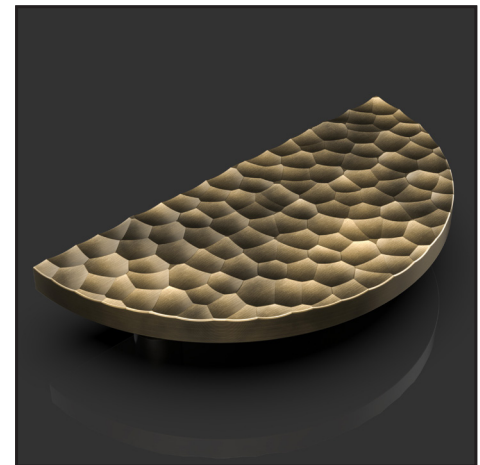
BENJAMIN CP I

EDGE PULLS, RING PULLS, DRAWER
FLUSH PULL & PAD HANDLES



FENIX 38 EP

50,75,100,150,200,300,400,500,600MM+

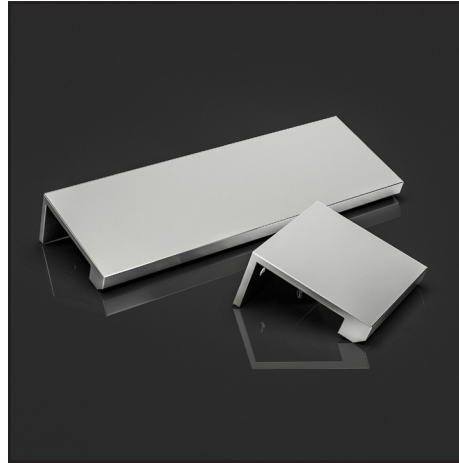


BENJAMIN CP I

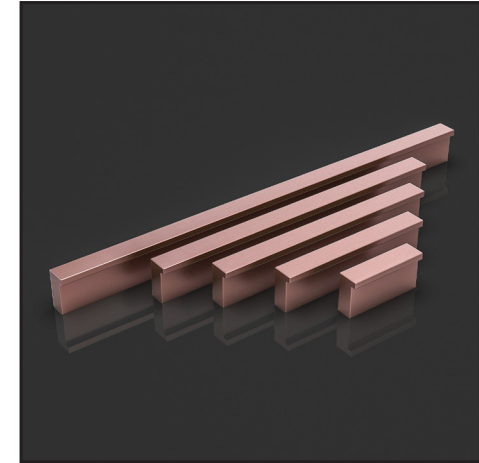
75,100,150,200,250,300+MM



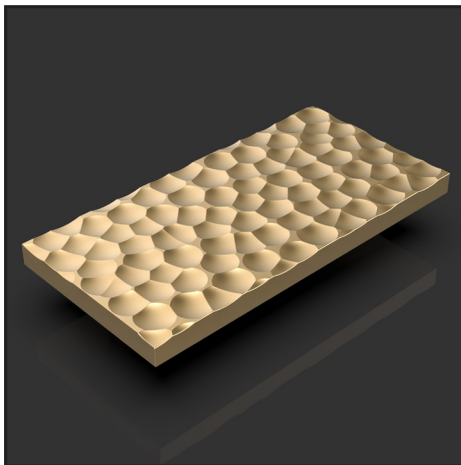
FENIX 50 EP
50,75,100,150,200,300,400,500,600MM+



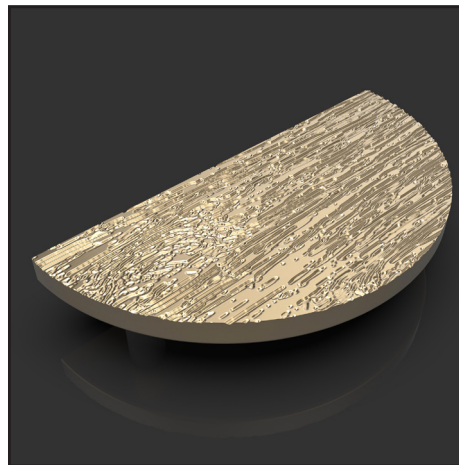
HARRIETTE EP
50,75,100,150,200,300,400,500,600MM+



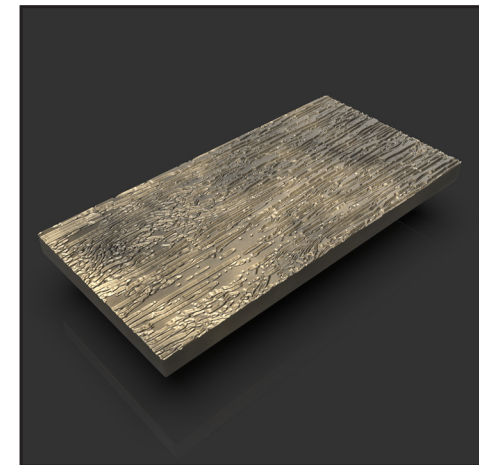
NEV EP
50,75,100,150,200,300,400,500,600MM+



BENJAMIN CP II
75,100,150,200,250,300+MM



SERLO CP I
75,100,150,200,250,300+MM

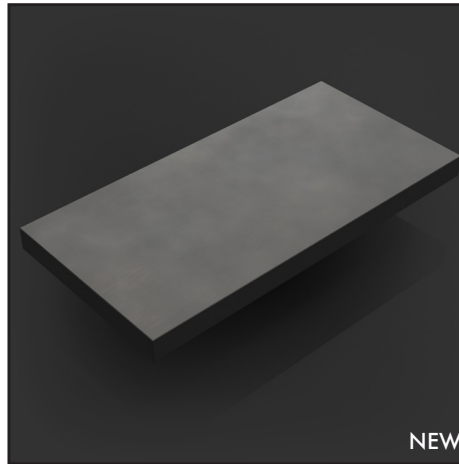


SERLO CP II
75,100,150,200,250,300+MM

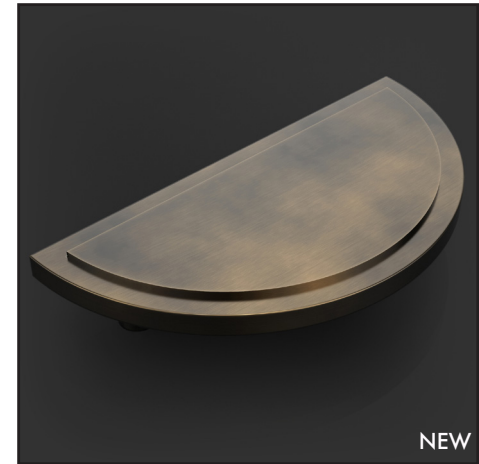
EDGE PULLS, RING PULLS, DRAWER
FLUSH PULL & PAD HANDLES



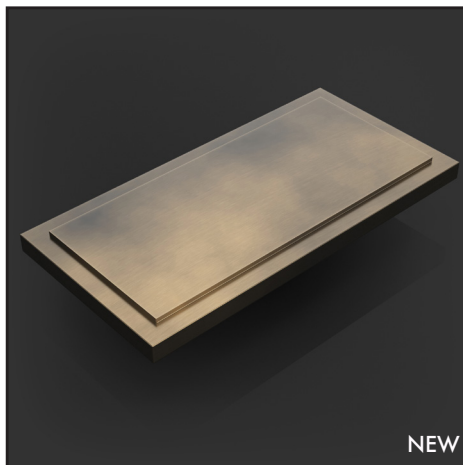
DAIN CP I
75,100,150,200,250,300+MM



DAIN CP II
75,100,150,200,250,300+MM



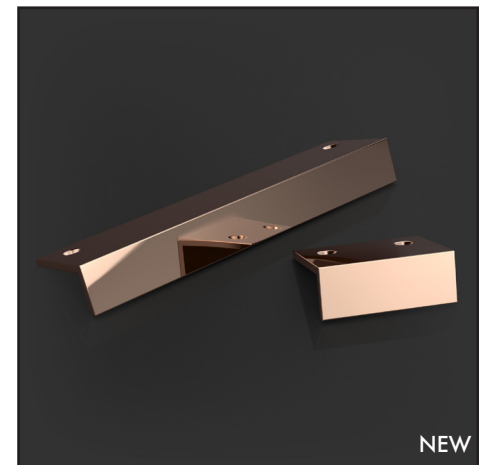
ANTHONY CP I
75,100,150,200,250,300+MM



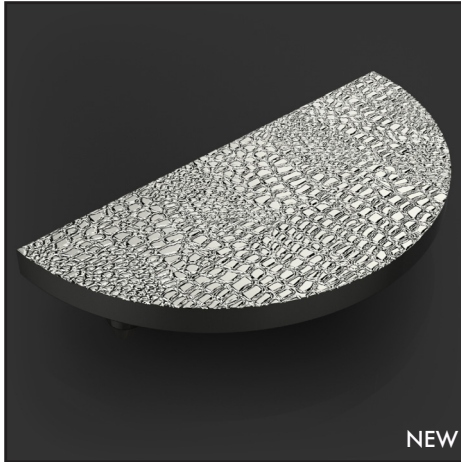
ANTHONY CP II
75,100,150,200,250,300+MM



ARTHUR EP
50,75,100,150,200,300,400,500,600MM+

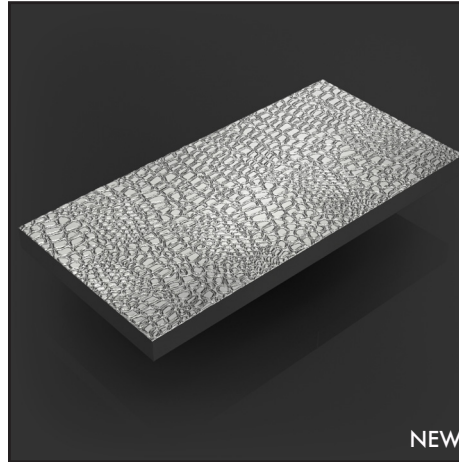


CEDRIC EP
50,75,100,150,200,300,400,500,600MM+



NEW

FOLCARD CP I
75,100,150,200,250,300+MM



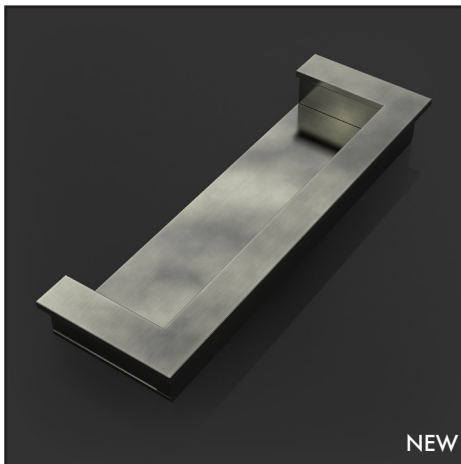
NEW

FOLCARD CP II
75,100,150,200,250,300+MM



NEW

HARROGATE FPP
75MM



NEW

BENEDICT CFP
100,175,300MM



NEW

COURTOIS CFP
75MM



NEW

OCTAVIUS CFP
100,175,300MM



INGLAIN CH I

CABINET HANDLES



AMR CH I
25,32,38MM



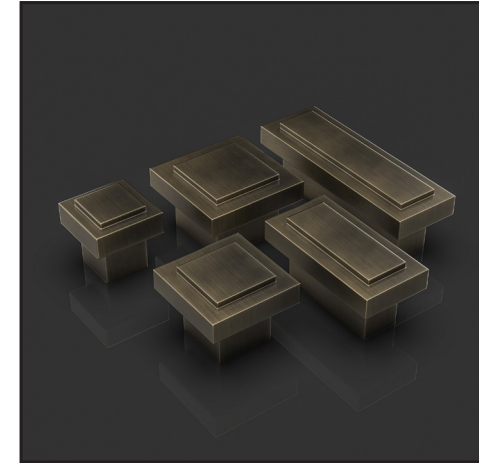
ANTHONY CH III
120,240,360,480,600,800MM



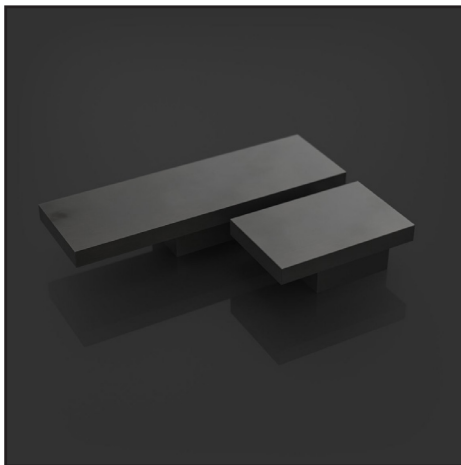
AMR CH II
120,240,360,480,600,800MM



ANTHONY CH I
20,25,30,38MM



ANTHONY CH II
25,32,38,50,50X25,75X25MM



ASHER CH
50,100MM

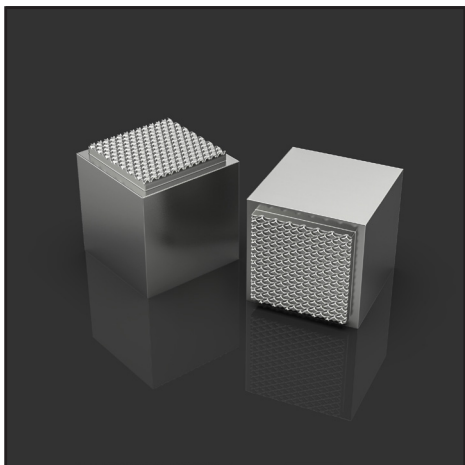


BAUDWIN
20,25,30,38MM



BAUSAN CH
100,150,200MM

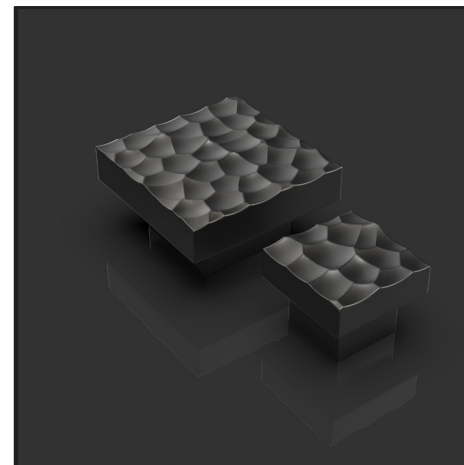
CABINET HANDLES



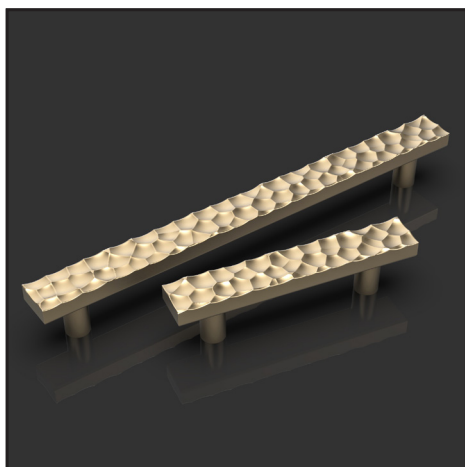
BEATRICE CH I
22,25,32MM



BEATRICE CH II
120,240,360,480,600,800MM



BENJAMIN CH 1
30,50MM



BENJAMIN CH II
120,240,360,480,600,800MM



BETAN CH I
20,25,30,38MM



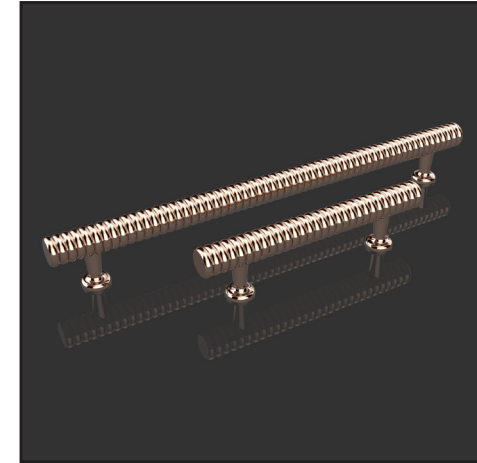
BETAN CH II
120,240MM



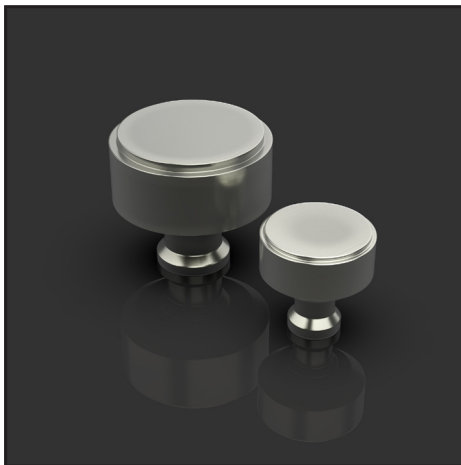
BOW CH
70MM



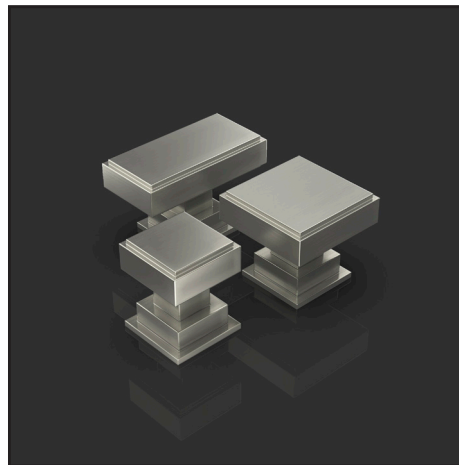
BRASTIUS CH I
20,25,30,38MM



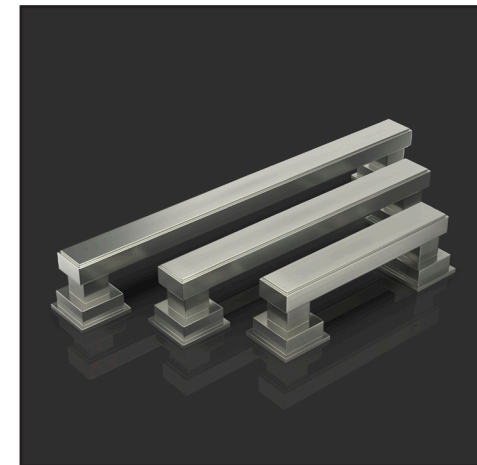
BRASTIUS CH II
120,240MM



BREUNOR CH I
20,25,30,38MM



BREUNOR CH II
25,32,38,50X32MM



BREUNOR CH III
150,250,350,450,600,800MM



DRAKE CH II

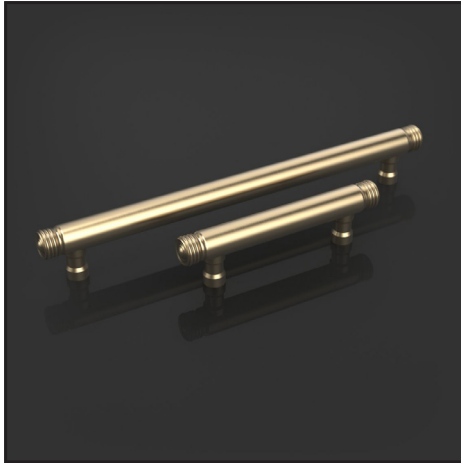
CABINET HANDLES



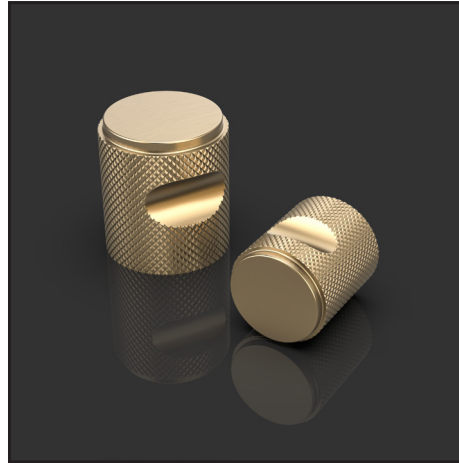
CASSIUS CH I
20,25,30,38MM



CONSTANTINE
40,50,60MM



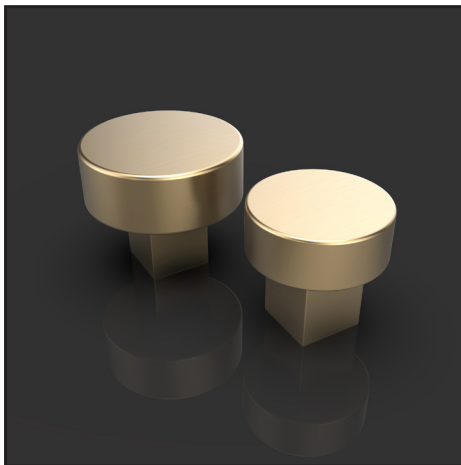
CASSIUS CH II
120,240,360,480,600,800MM



CARLOS CH I
25,30MM



CARLOS CH II
150,250,350,450,600,800MM



COURTOIS CH I
20,25,32,38MM

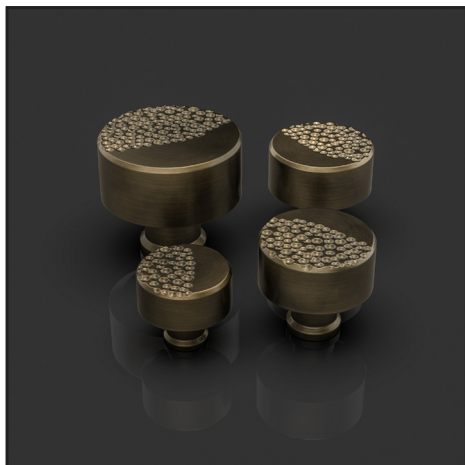


COURTOIS CH II
120,240,360,480,600,800MM



DARWIN CH
50,100,150MM

CABINET HANDLES



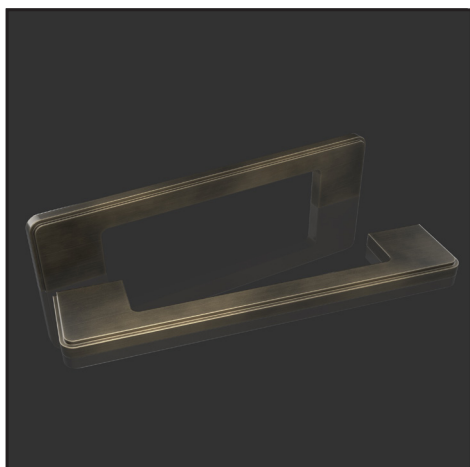
DRAKE CH I
25,30,38MM



DRAKE CH II
120,240,360,480,600,800MM



DURNURE
20,25,30,38MM

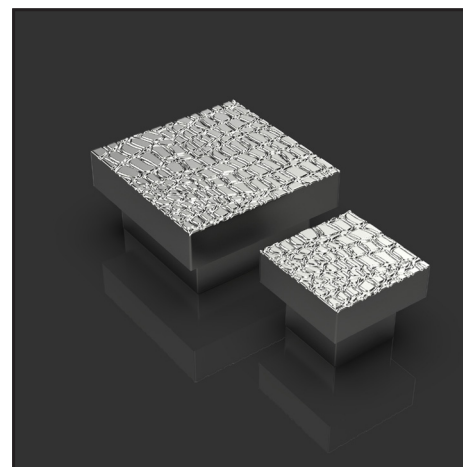


ELIZABETH CH
150,250,350,450,600,800MM



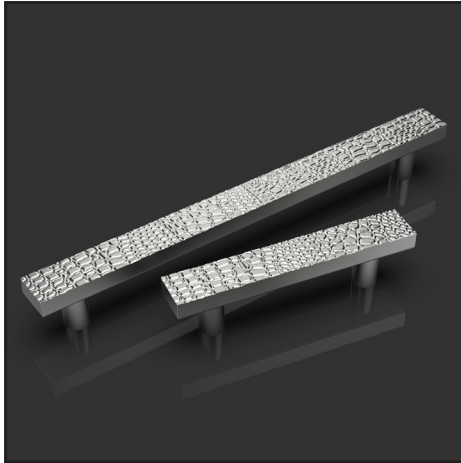
FLORENCE CH
30,38MM

NEW

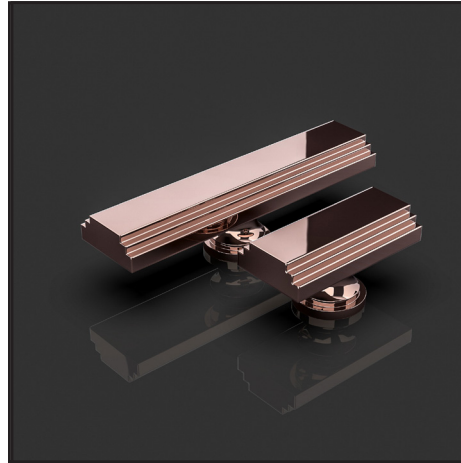


FOLCARD CH I
30,50MM

ESTABLISHED 1972



FOLCARD CH II
120,240,360,480,600,800MM



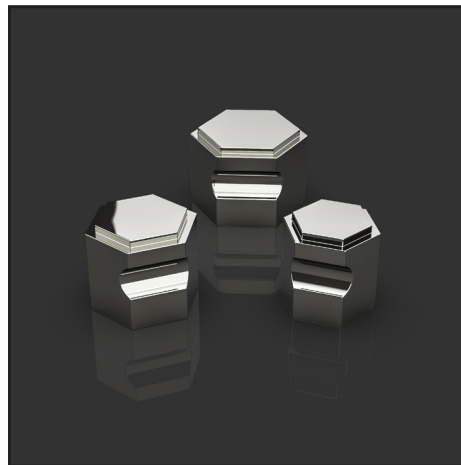
GALANHEAD CH
50,100MM



GINGLAIN CH I
20,25,30,38MM



GINGLAIN CH II
120,240,360,480,600,800MM



HARRIETTE CH I
22,25,32MM



HARRIETTE CH II
120,240,360,480,600,800MM



REN CH I

CABINET HANDLES



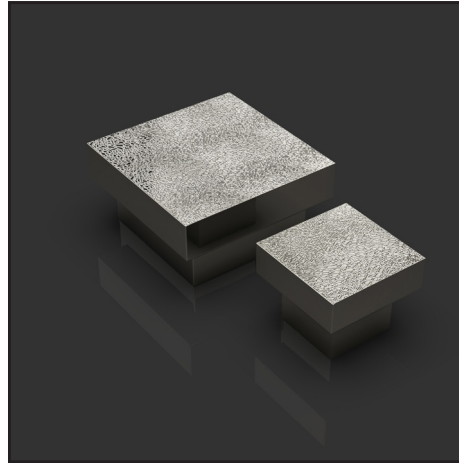
HARROGATE CH I
20,25,30,38MM



INDUSTRIAL CH I
25,30,38MM



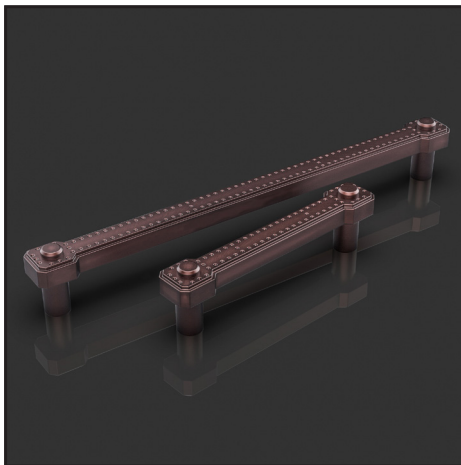
HESTON CH
30,50MM



HUTCH CH I
30,50MM



HUTCH CH II
120,240,360,480,600,800MM



INDUSTRIAL CH II
120,240,360,480,600,800MM

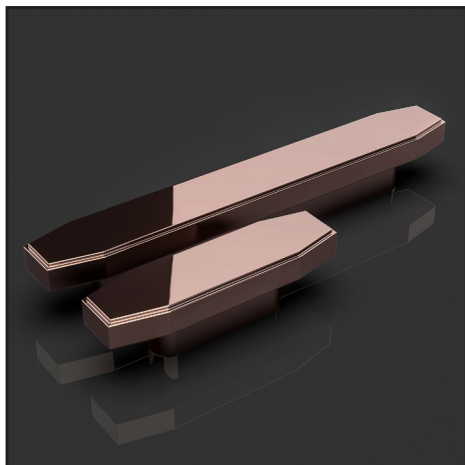


LANCELOT CH
20,25,30,38MM



LIONEL
40,50,60MM

CABINET HANDLES



MACEY CH
50,100MM



MORIEN CH
75,100MM



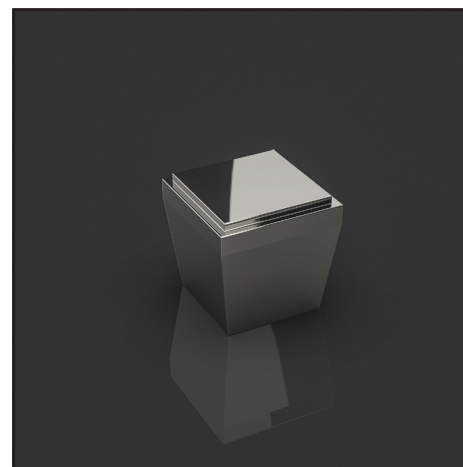
ORGELUSE CH
25,30,38MM



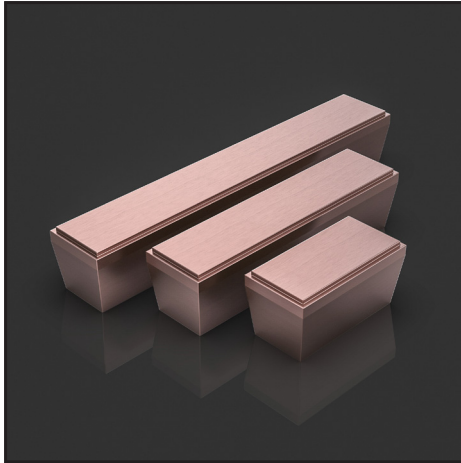
ORIGIN CH I
25,30,38MM



ORIGIN CH II
120,240,360,480,600,800MM



RAINARD CH I
25,32MM



RAINARD CH II
50,100,150MM



REN CH I
40,50,60MM



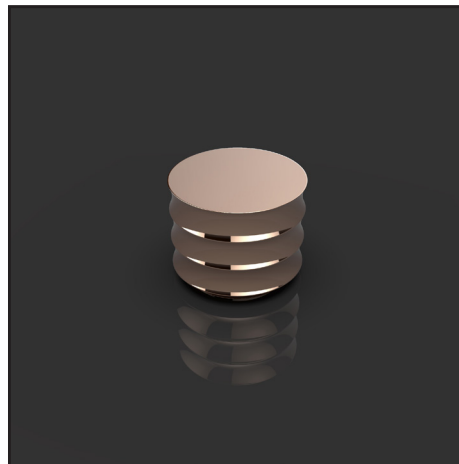
NEW

REN CH II
40,50,60MM



NEW

REN CH III
120,240,360,480,600,800MM

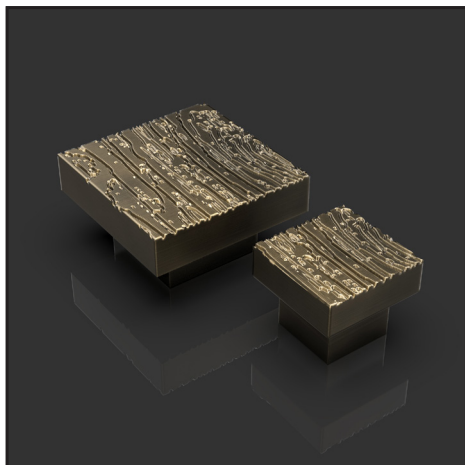


REX CH I
25,30,38MM



REX CH II
120,240MM

CABINET HANDLES



SERLO CH I
30,50MM



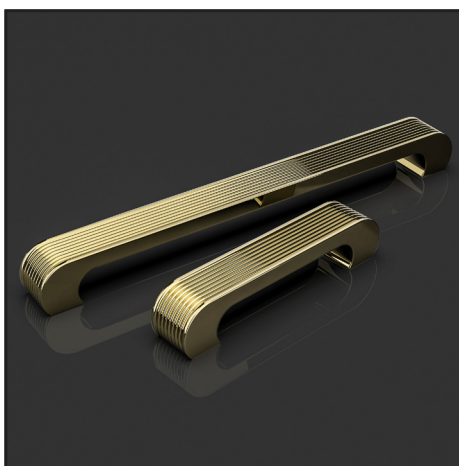
SERLO CH II
120,240,360,480,600,800MM



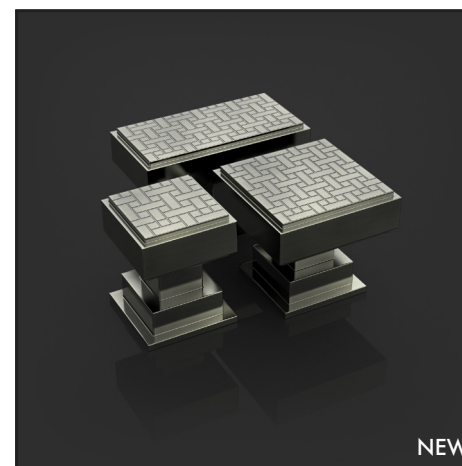
SHAGREEN CH I
25,30,38MM
LEATHER/FABRIC OPTIONS AVAILABLE ON PAGE 76



SIMON CH I
20,25,30,38MM

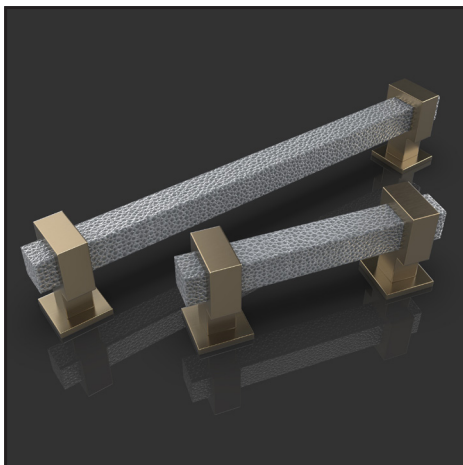


SIMON CH II
120,240,360,480,600,800MM



VIOLET CH I
25,32,38MM

NEW



SHAGREEN CH II
120,240,360,480,600,800MM
LEATHER/FABRIC OPTIONS AVAILABLE ON PAGE 76



NEW

VIOLET CH II
150,250,350,450,600,800MM



HARRIETTE EP

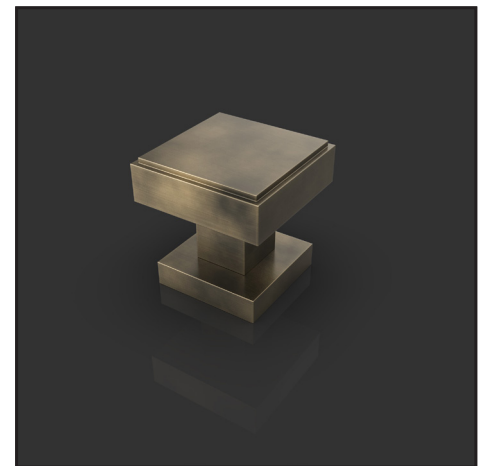


AGRAVAIN CDK

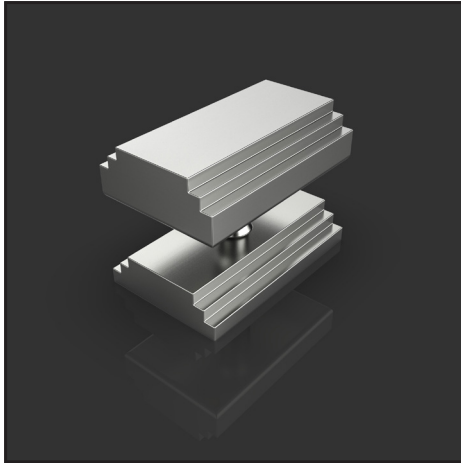
CENTRE DOOR KNOBS



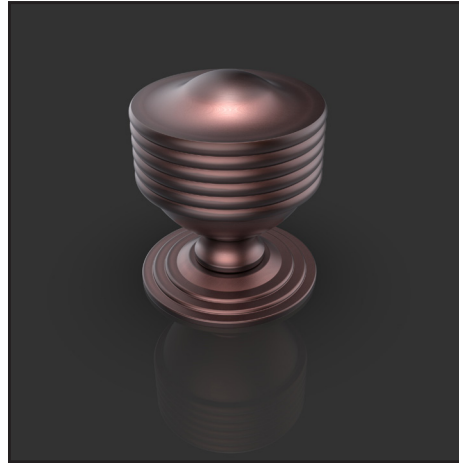
ALAN CDK
100MM



COURTOIS CDK
100MM



AMR CDK
100MM



BRASTIUS CDK
100MM



CASSIUS CDK
100MM



GINGLAIN CDK
100MM



LANCELOT CDK
100MM

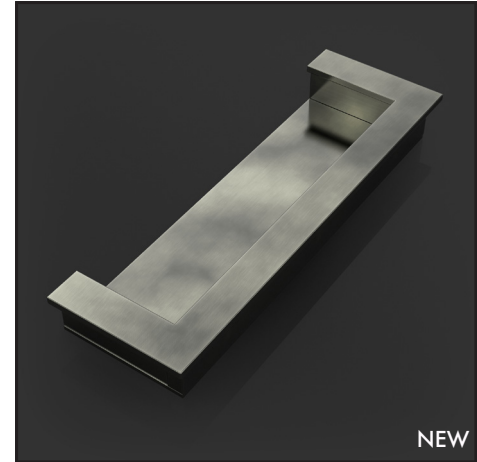


REX CDK
100MM

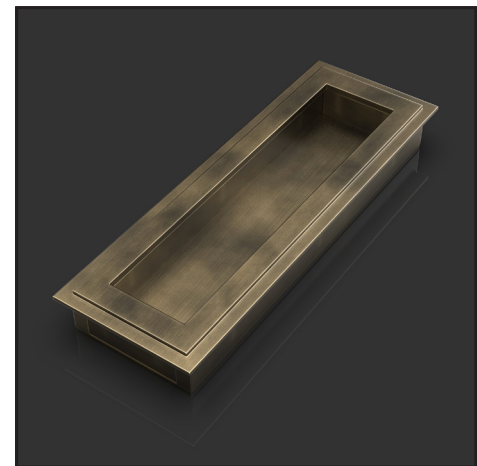


REN FP

FLUSH PULLS



BENEDICT CFP
100,175,300MM



ANTHONY FP
100,175,300MM



NEW

COURTOIS CFP
75MM

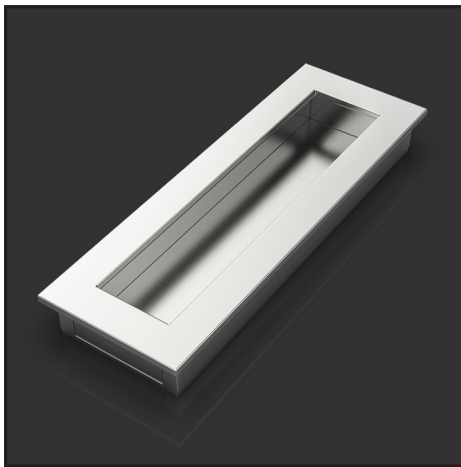


NEW

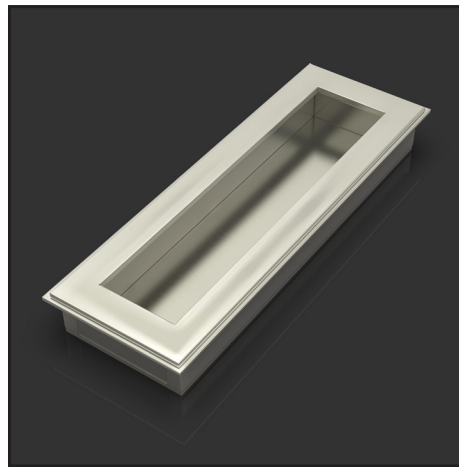
OCTAVIUS CFP
100,175,300MM



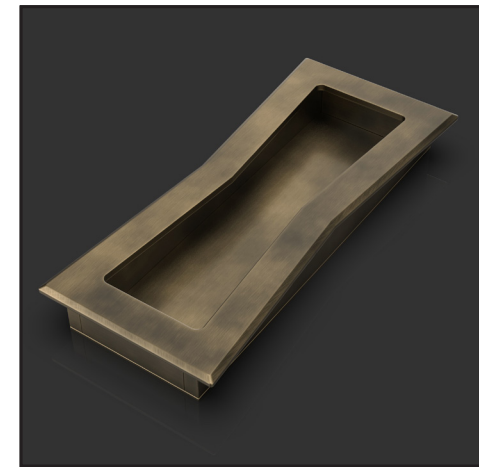
AMR FP
100,175,300MM



BENEDICT FP
100,175,300MM



BREUNOR FP
100,175,300MM

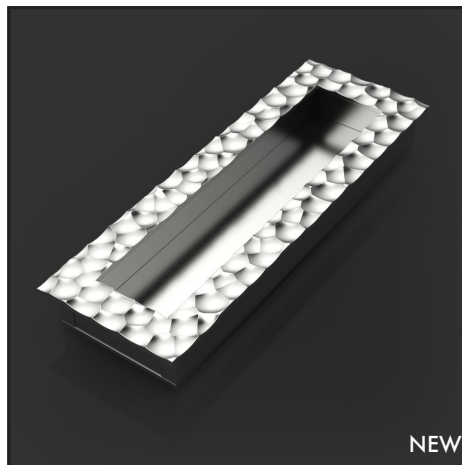


BOW FP
175MM

FLUSH PULLS

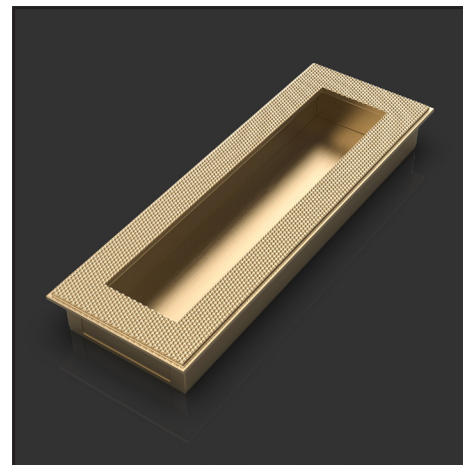


BENJAMIN FP
100,175,300MM

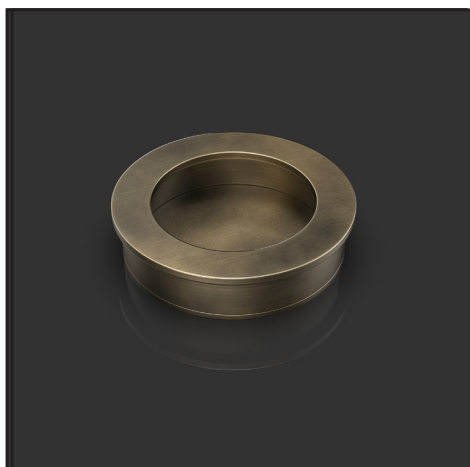


NEW

BENJAMIN FP II
100,175,300MM



CARLOS FP
100,175,300MM

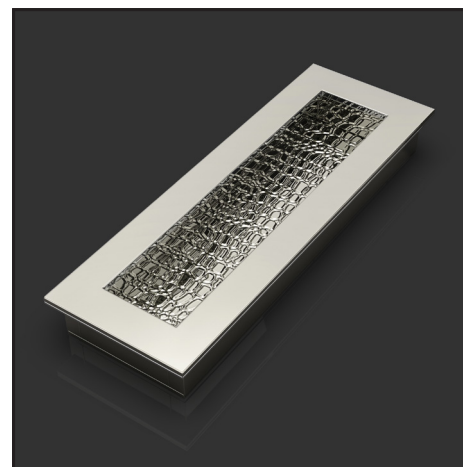


COURTOIS FP
50,65,75MM



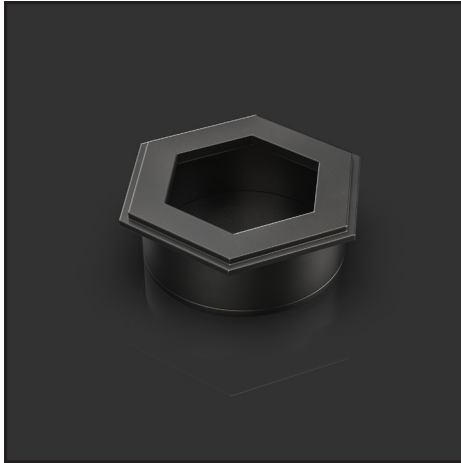
NEW

FLORENCE FP
75MM



FOLCARD FP
100,175,300MM

ESTABLISHED 1972



HARRIETTE FP
57,63MM



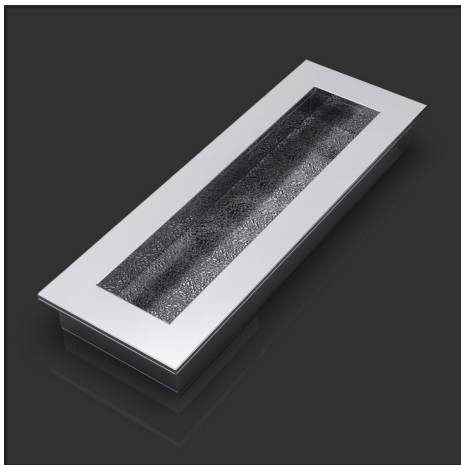
NEW

HARROGATE FP
75MM

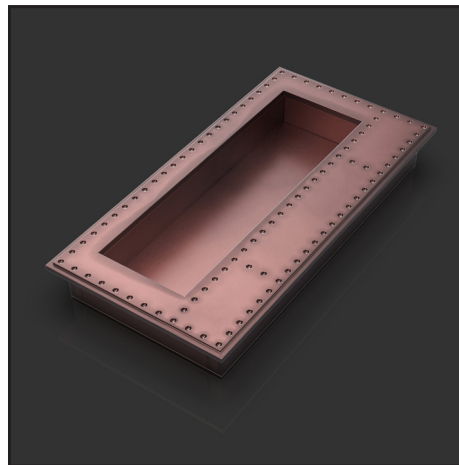


NEW

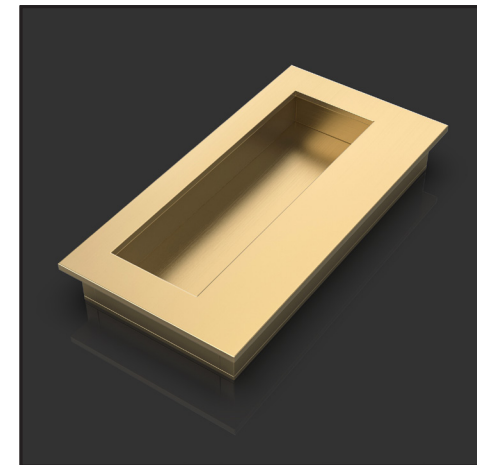
HARROGATE FFP
75MM



HUTCH FP
100,175,300MM



INDUSTRIAL FP
150,300MM



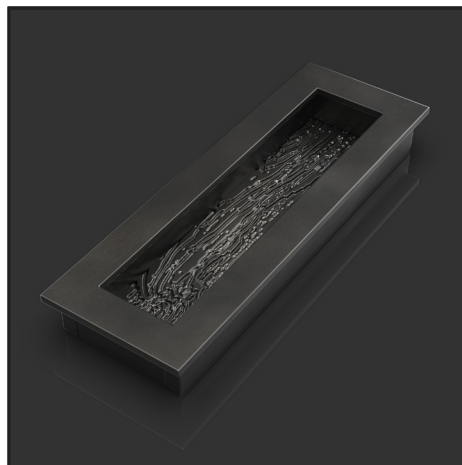
LOUIS FP
150,300MM

FLUSH PULLS



NEW

REN FP
50,65,75MM

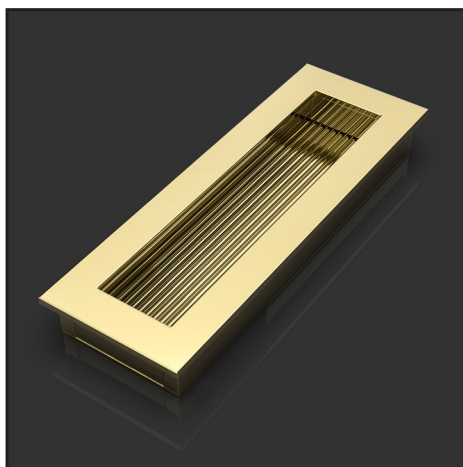


SERLO FP
100,175,300MM



NEW

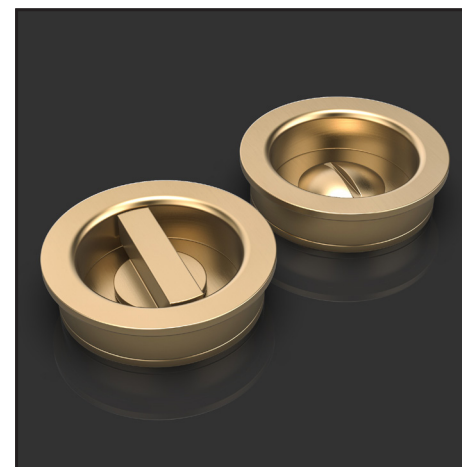
SERLO FP II
100,175,300MM



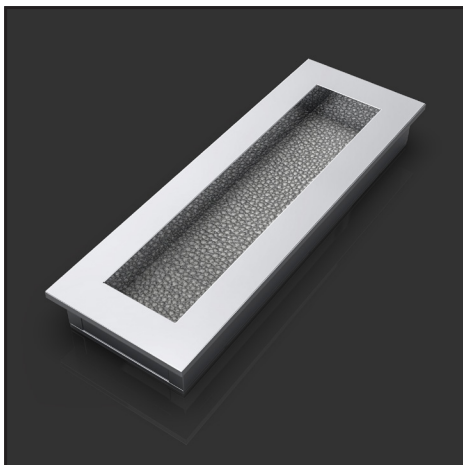
SIMON FP
100,175,300MM



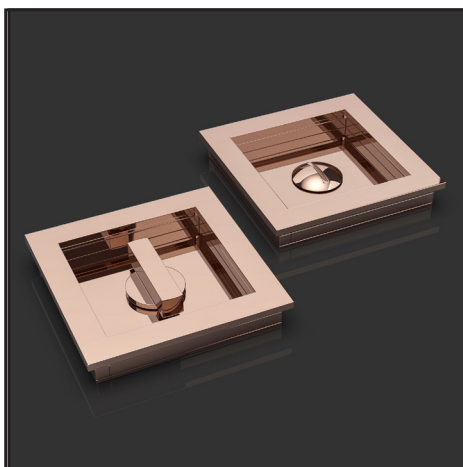
BENEDICT FP TR
100,175,300MM



COURTOIS FP TR
50,65,75MM



SHAGREEN FP
100,175,300MM
LEATHER/FABRIC OPTIONS AVAILABLE ON PAGE 76



SAMUEL FP TR
75MM



AMR FP



AMR PH

PULL HANDLES

OLIVER KNIGHTS MANUFACTURES OUR ENTIRE COLLECTION OF PULL HANDLES TO ORDER FROM SOLID BRASS. THIS ALLOWS US TO MAKE BESPOKE DESIGN ALTERATIONS AND SIZE ALTERATIONS FOR OUR CLIENTS WHO MAY BE USING EXISTING DOORS OR WOULD LIKE TO CREATE A UNIQUE PIECE FOR THEIR DOOR.

BACKPLATES & ROSES

BACKPLATES AND ROSES ARE AVAILABLE ON REQUEST, PLEASE ASK FOR FURTHER DETAILS.

FIXINGS

OLIVER KNIGHTS OFFER 3 FIXINGS METHODS TO CHOOSE FROM AS STANDARD. THESE ARE BOLT THROUGH FIX, BACK TO BACK PAIR FIX AND CONCEALED SECRET FIX. BESPOKE FIXING SOLUTIONS CAN BE PROVIDED UPON REQUEST.

FINISHES

OUR ENTIRE COLLECTION OF PULL HANDLES ARE AVAILABLE IN ALL OF OUR FINISHES THAT CAN BE FOUND AT THE BACK OF THIS BROCHURE.



AMR PH
300,450,600,900MM



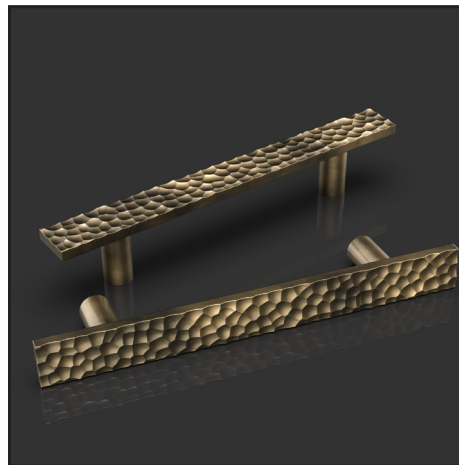
ANTHONY PH
300,450,600,900MM



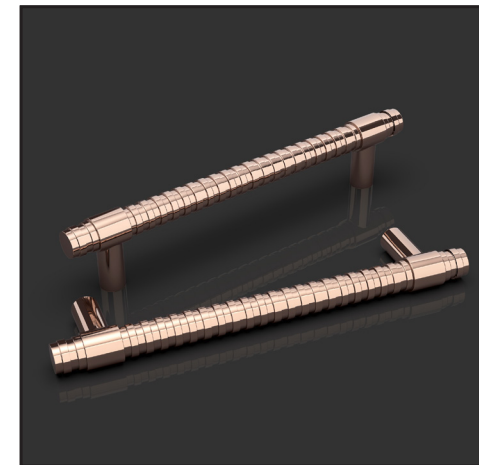
BAUSAN PH
300,450,600,900MM



BEATRICE PH
300,450,600,900MM

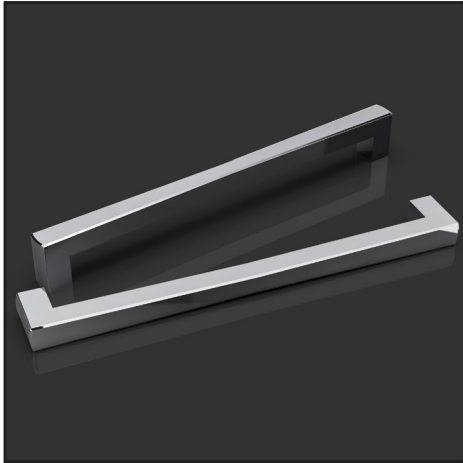


BENJAMIN PH
300,450,600,900MM

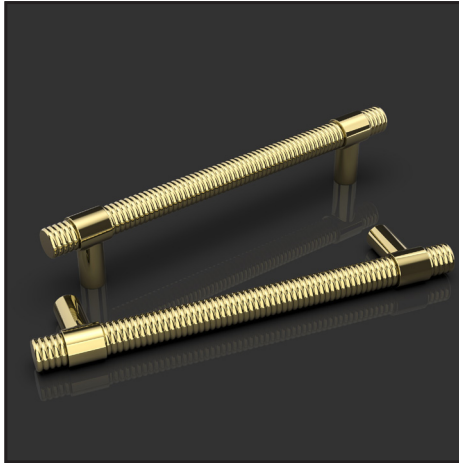


BETAN PH
300,450,600MM

PULL HANDLES



BOW PH
300,400MM



BRASTIUS PH
300,450,600MM



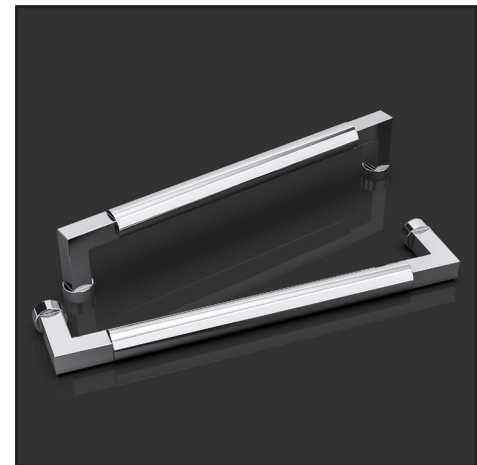
BREUNOR PH
300,450,600,900MM



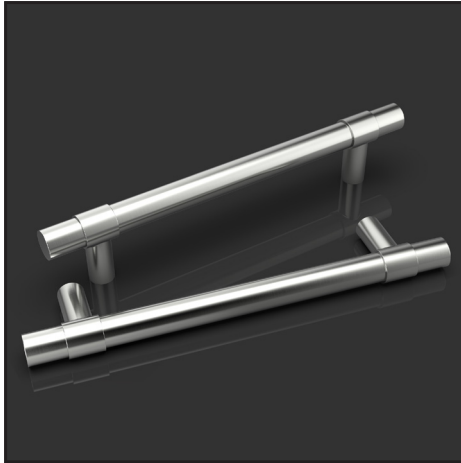
CARLOS PH
300,450,600,900MM



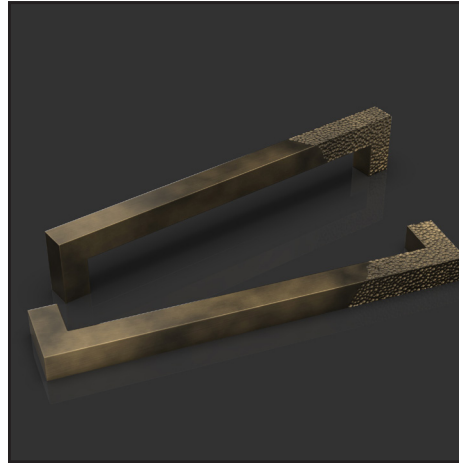
CASSIUS PH
300,450,600,900MM



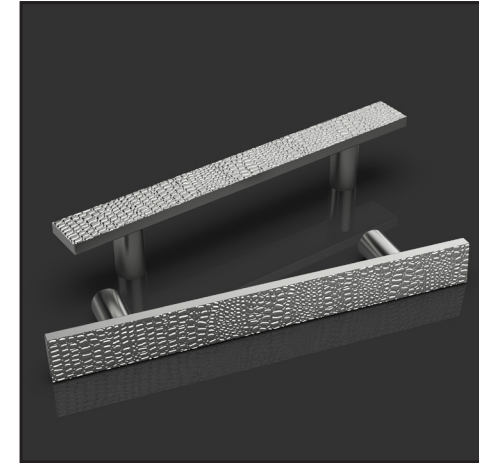
COURTOIS PH
300,450,600,900MM



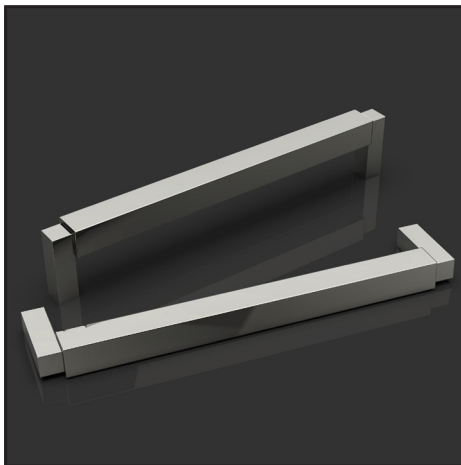
DAIN PH
300,450,600,900MM



DRAKE PH
300,450,600,900MM



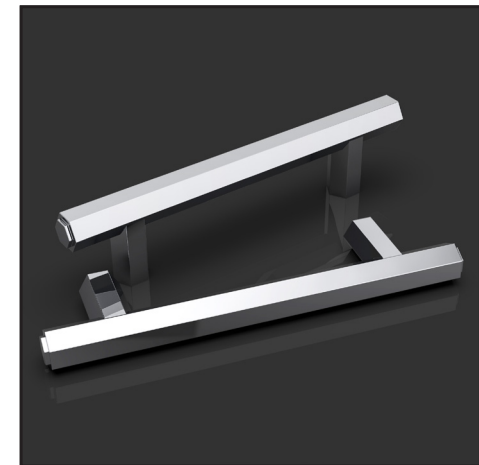
FOLCARD PH
300,450,600,900MM



GIFFORD PH
300,450,600,900MM

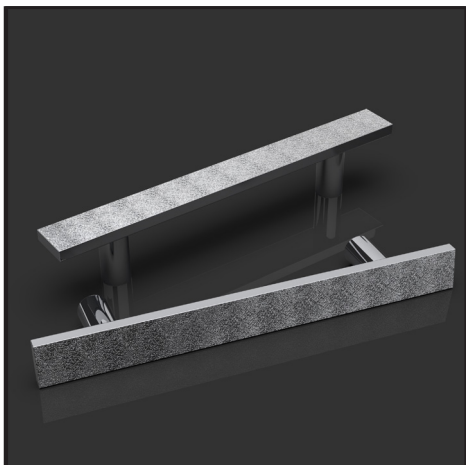


GINGLAIN PH
300,450,600,900MM

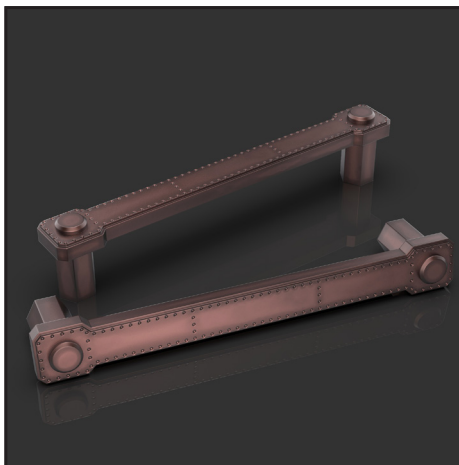


HARRIETTE PH
300,450,600,900MM

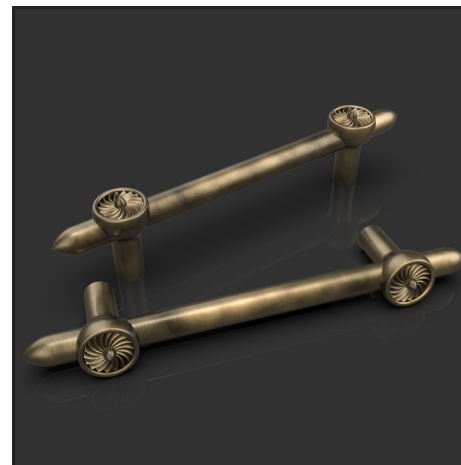
PULL HANDLES



HUTCH PH
300,450,600,900MM



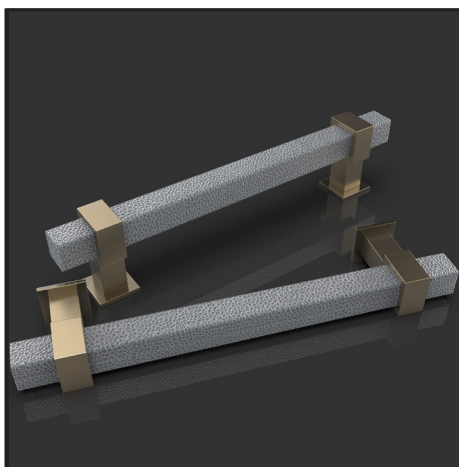
INDUSTRIAL PH
300,450,600,900MM



ORIGINS PH
300,450,600,900MM



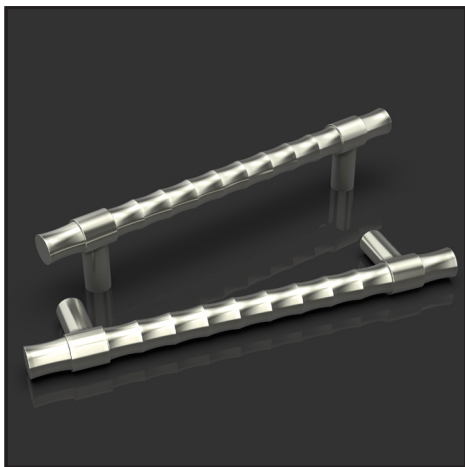
SERLO PH
300,450,600,900MM



SHAGREEN PH
300,450,600,900MM
LEATHER/FABRIC OPTIONS AVAILABLE ON PAGE 76



SIMON PH
300,450,600,900MM



REX PH
300,450,600MM



NEW

VIOLET PH
300,450,600,900MM

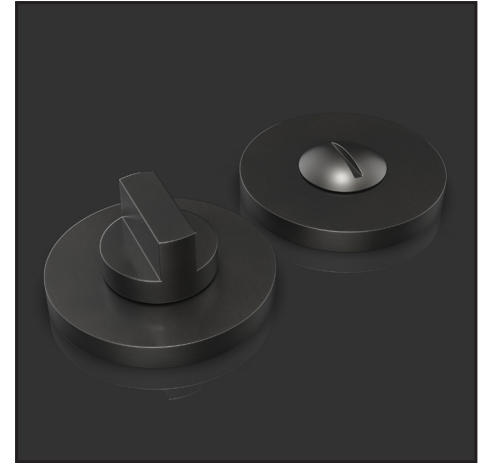


SERLO PH

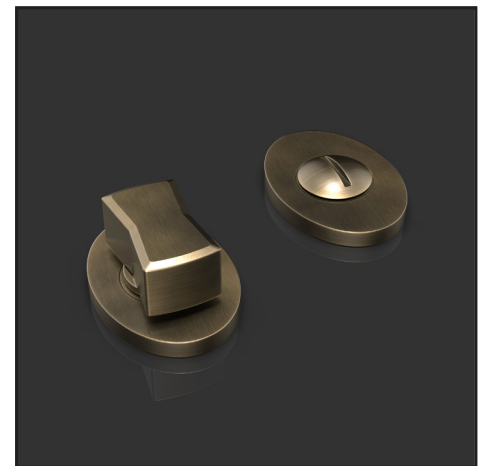


HARRIETTE TR

TURN & RELEASES

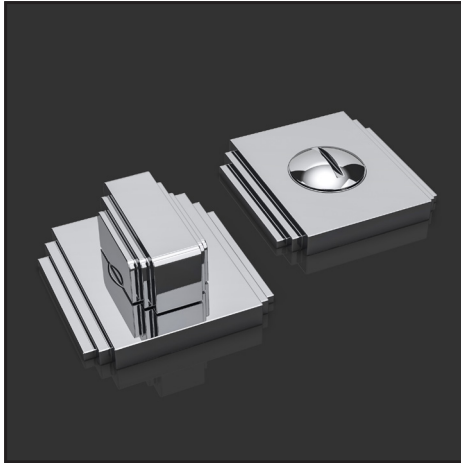


ALBER TR

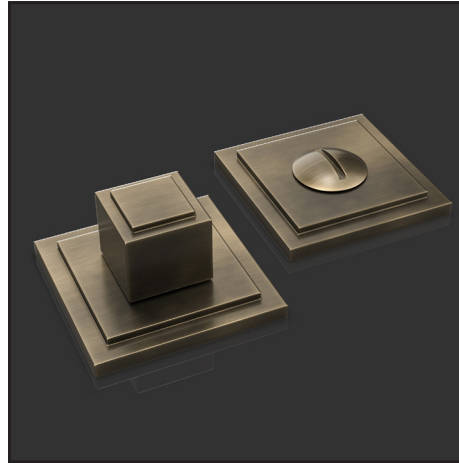


BOW TR

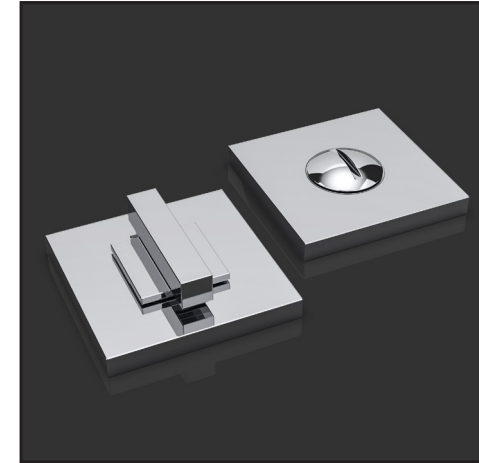
- TURN & RELEASE ROSE DESIGNS CAN BE SWAPPED TO SUIT LEVER AND DOOR KNOB DESIGN & INCORPORATED INTO ALL BACKPLATES.



AMR TR



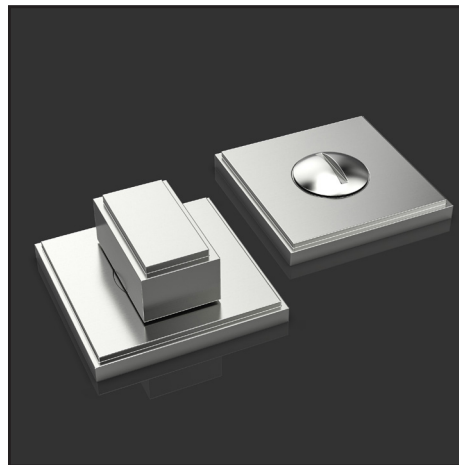
ANTHONY TR



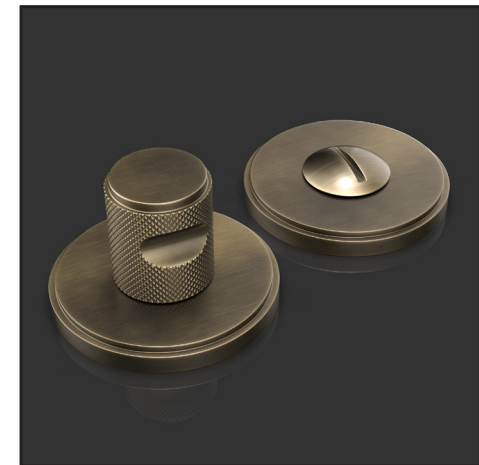
ARTHUR TR



BRASTIUS TR



BREUNOR TR



CARLOS TR

TURN & RELEASES

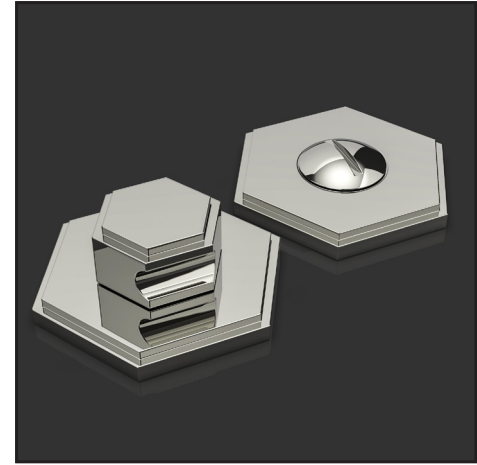
- TURN & RELEASE ROSE DESIGNS CAN BE SWAPPED TO SUIT LEVER AND DOOR KNOB DESIGN & INCORPORATED INTO ALL BACKPLATES.



CASSIUS TR



GINGLAIN TR



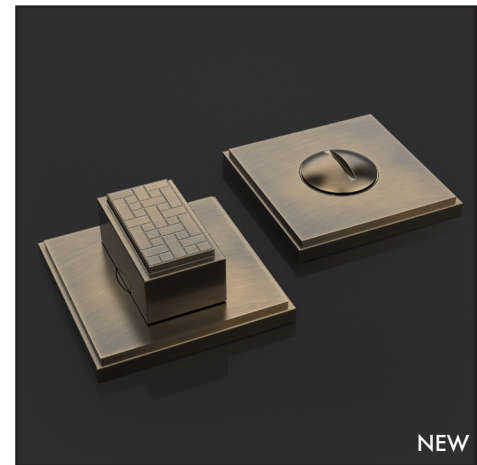
HARRIETTE TR



INDUSTRIAL TR



MILLIE TR

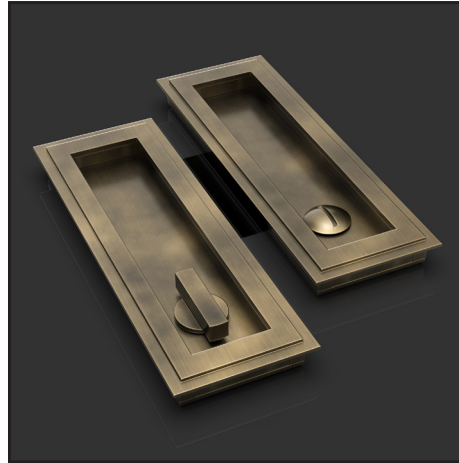


VIOLET TR

NEW



AMR FP TR
175,300MM



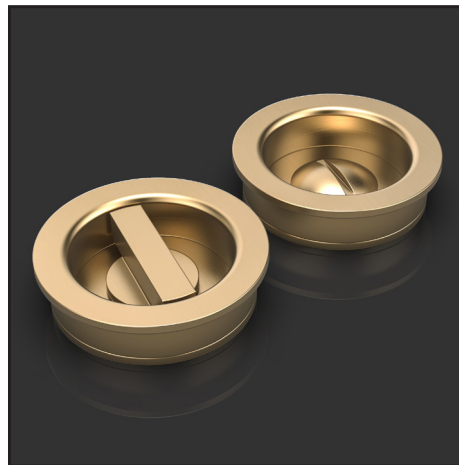
ANTHONY FP TR
175,300MM



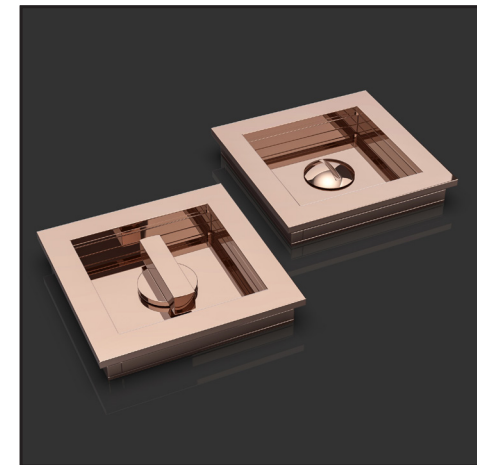
BENEDICT TR FP
175,300MM



BREUNOR TR FP
175,300MM



COURTOIS TR FP
50,65,75MM



SAMUEL TR FP
75MM

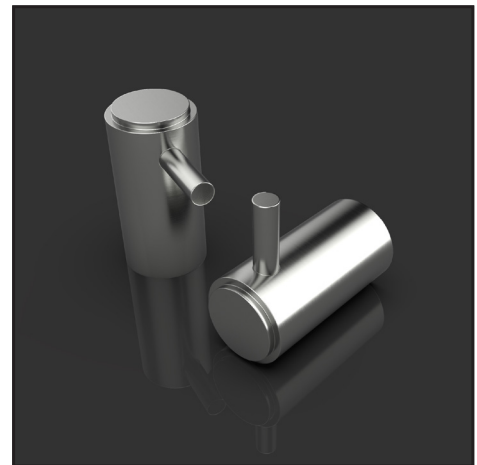


INGLAIN DS

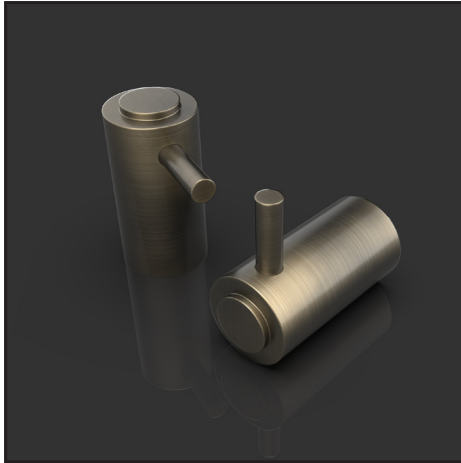
DOOR STOPS, ROBE HOOKS & MISCELLANEOUS



ANTHONY DS



BREUNOR RH



ANTHONY RH



BENJAMIN DS



BREUNOR DS



CASSIUS DS



CASSIUS RH



CARLOS DS

DOOR STOPS, ROBE HOOKS & MISCELLANEOUS



CARLOS RH



AGRAVAIN DS



DRAKE DS



FOLCARD DS



INGLAIN DS



INGLAIN RH

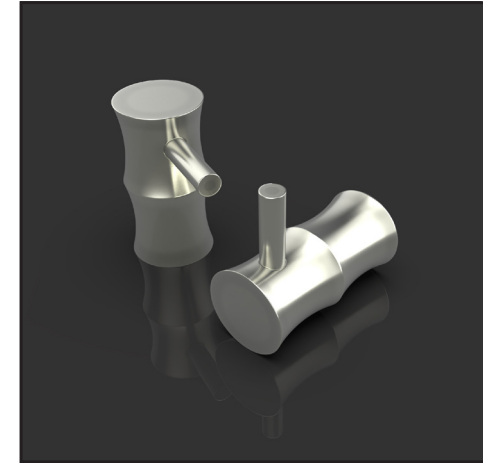
ESTABLISHED 1972



LANCELOT DS



REX DS



REX RH



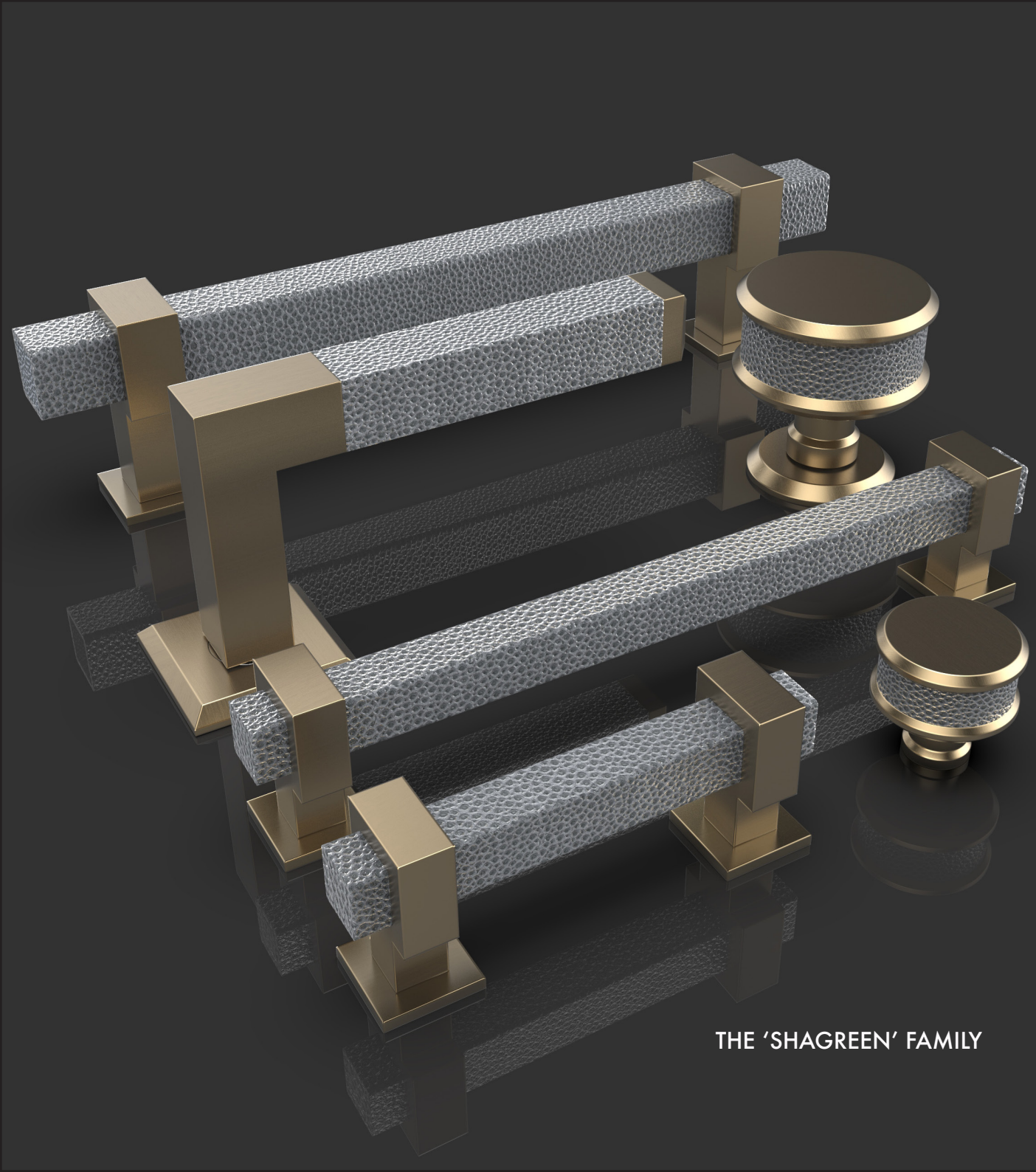
SERLO DS



SIMON DS



CEDRIC CBP



THE 'SHAGREEN' FAMILY

PRODUCT FAMILIES



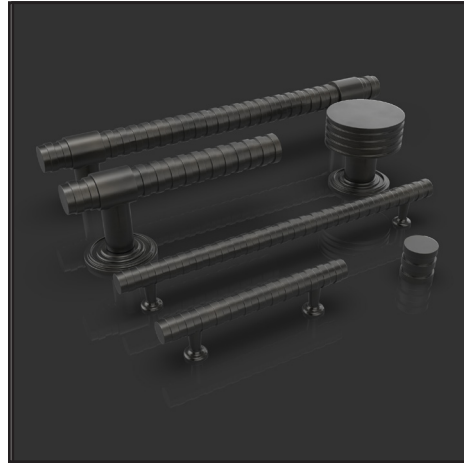
THE 'AMR' FAMILY



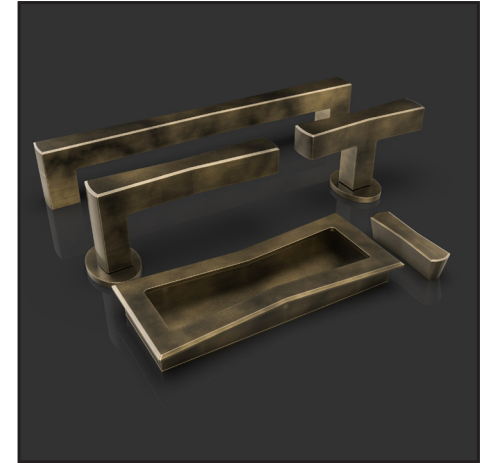
THE 'BRASTIUS' FAMILY



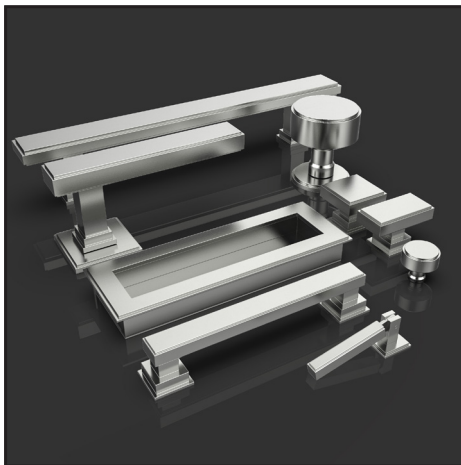
THE 'ANTHONY' FAMILY



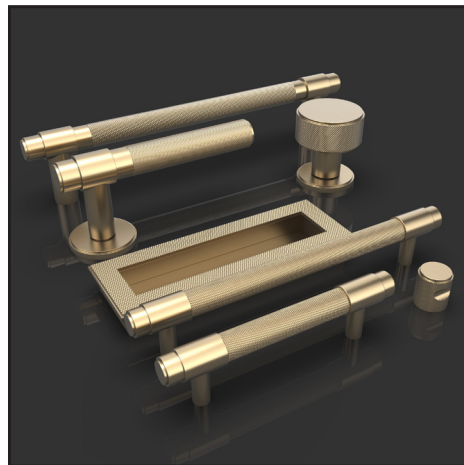
THE 'BETAN' FAMILY



THE 'BOW' FAMILY



THE 'BREUNOR' FAMILY

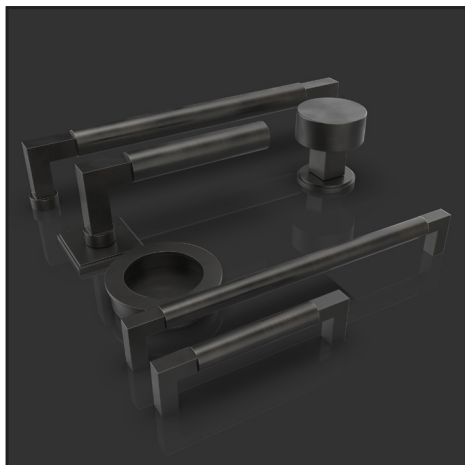


THE 'CARLOS' FAMILY



THE 'CASSIUS' FAMILY

PRODUCT FAMILIES



THE 'COURTOIS' FAMILY



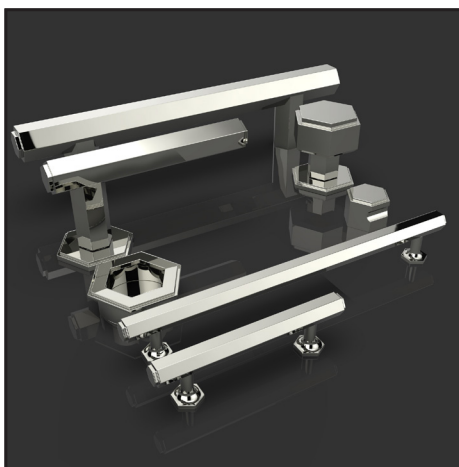
THE 'DRAKE' FAMILY



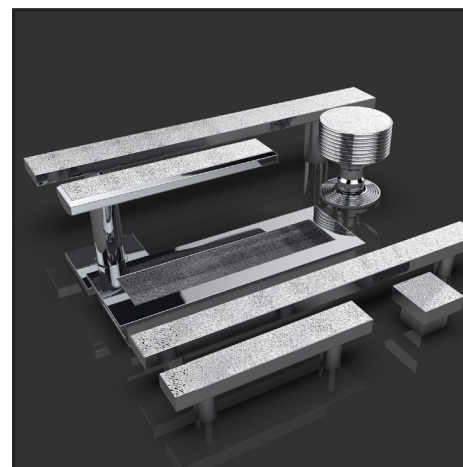
THE 'FOLCARD' FAMILY



THE 'GINGLAIN' FAMILY



THE 'HARRIETTE' FAMILY



THE 'HUTCH' FAMILY

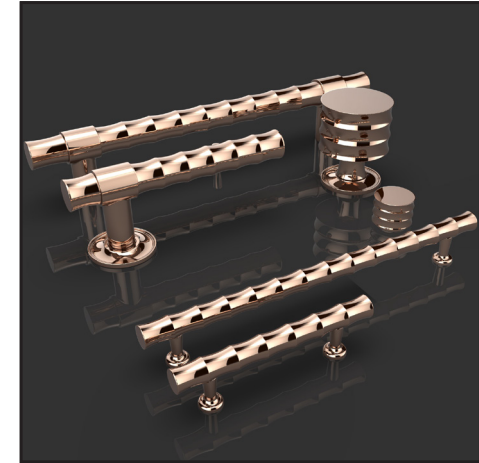
ESTABLISHED 1972



THE 'INDUSTRIAL' FAMILY



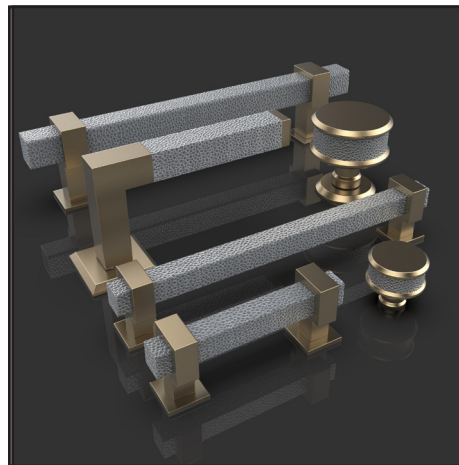
THE 'ORIGINS' FAMILY



THE 'REX' FAMILY



THE 'SERLO' FAMILY



THE 'SHAGREEN' FAMILY
LEATHER/FABRIC OPTIONS AVAILABLE ON PAGE 76



THE 'SIMON' FAMILY



BACKPLATES

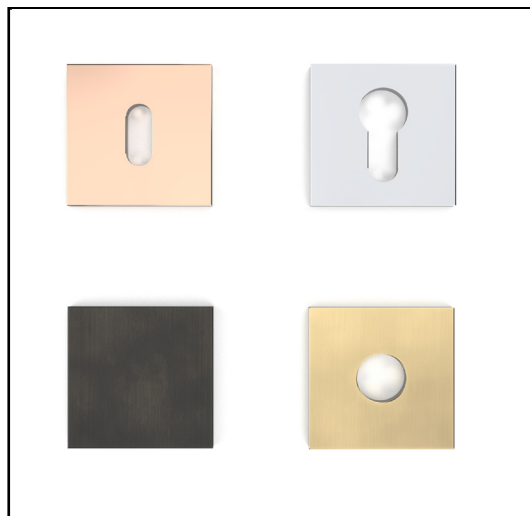
OLIVER KNIGHTS MANUFACTURES OUR ENTIRE COLLECTION OF BACKPLATES TO ORDER IN HOUSE FROM SOLID BRASS. THIS GIVES US THE FLEXIBILITY TO MAKE BESPOKE DESIGN AND SIZE ALTERATIONS FOR OUR CLIENTS WHO MAY BE USING EXISTING DOORS OR WOULD LIKE TO CREATE A UNIQUE PIECE FOR THEIR DOOR.

WHILST OFFERING A BESPOKE SERVICE WE ALSO TRY AND OFFER A BEAUTIFUL AND VAST COLLECTION OF IN HOUSE CREATED PRODUCTS AVAILABLE IN A WIDE SELECTION OF SIZES, DESIGNS AND INTERGRATED DOOR LOCK AND LATCH FEATURES.

WE OFFER ALL OF OUR DESIGNS IN 4 STANDARD SIZES WHICH INCLUDES; 50MM SQ. / 50MM DIA. ROSE AS A STANDARD GOING TO THE NEXT SIZE UP BEING A 80MM X 50MM BACKPLATE TO PROVIDE AN ALTERNATIVE TWIST TO OUR REGULAR SQUARE OR ROUND ROSE. THE FOLLOWING STEP UP FROM OUR 80MM BACKPLATE IS THE TRADITIONAL 230MM X 50MM BACKPLATE WHICH COMPLIMENTS ANY DOOR PERFECTLY. WITH OUR LARGEST BACKPLATES GOING UP TO 350MM X 63.5MM. TRULEY PREPOSSESSING PIECES.

WITH OUR 230MM AND 350MM BACKPLATES WE OFFER OUR BACKPLATES WITH THE OPTION TO INCORPORATE ALL STANDARD LOCKING MECHANISMS INCLUDING EURO LOCKS, KEY LOCKS AND BATHROOM TURN AND RELEASE LOCKS

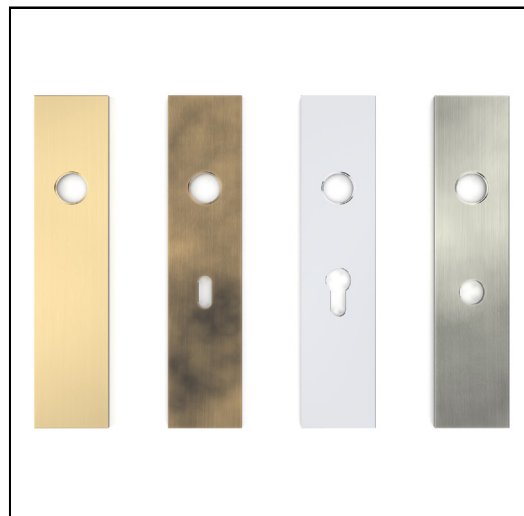
WE ALSO OFFER ESCUTCHEONS FOR ALL OF OUR SQUARE AND ROUND ROSES INCLUDING A BLANK ROSE, A KEY CUT OUT, A EURO CUT OUT AND A ROSE TO SUIT A EURO LOCK.



ESCUTCHEONS...

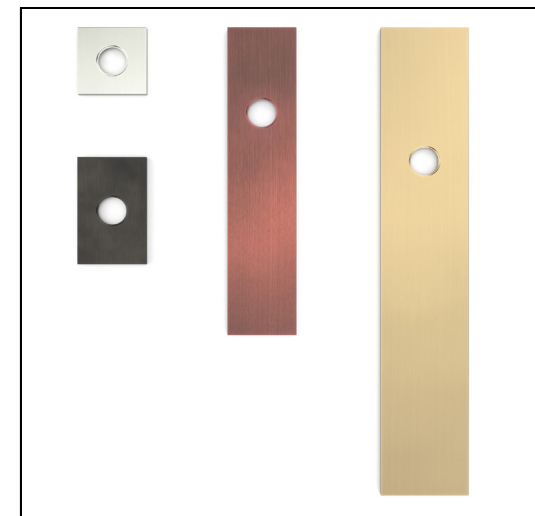
ALL OF OUR ROSES FEATURED THROUGH OUT OUR STUNNING COLLECTION ARE ALL AVAILABLE WITH EURO, KEYHOLE, BATHROOM TURN AND RELEASE AND BLANK PROFILES TO SUIT YOUR SPECIFICATION. ALL OF OUR ESCUTCHEONS ARE AVAILABLE IN ALL FINISHES, SIZES AND HAVE MULTIPLE FIXING APPLICATIONS TO SUIT THE CLIENT'S STYLE.

FIXING TYPES; CONCEALED FIX AND FRONT FACE FIXED.



BACKPLATE INCORPERATIONS...

BACKPLATES ARE ALSO AVAILABLE WITHIN OUR COLLECTION AND COME WITH THE OPTION TO SPECIFY A LOCK MECHANISM PROFILE IN THE BACKPLATE TO CREATE A CLEAN AND MINIMALIST LOOK WHEN TURNING A LOCKING MECHANISM INTO A FEATURE OF THE BACKPLATE AND INCORPERATING IT INTO THE DESIGN.

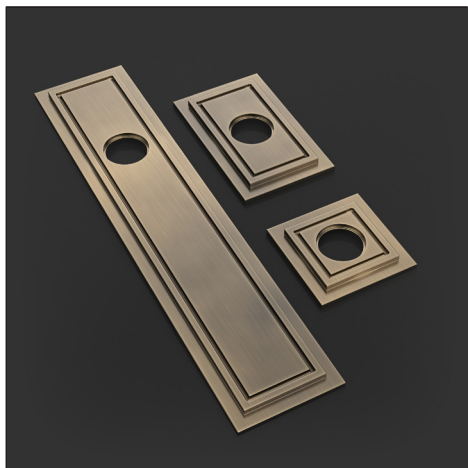


BACKPLATE SIZES...

OLIVER KNIGHTS MANUFACTURES ALL OF ITS PRODUCTS TO ORDER. THIS ALLOWS OUR CLIENT'S ENDLESS CAPABILITIES TO BRING TO ALTER DESIGNS TO SUIT. WE ALSO OFFER A SELECTION OF STANDARD SIZE BACKPLATES THAT GIVES THE CLIENT THE FLEXIBILITY TO TRULY CUSTOMISE THEIR HARDWARE PACKAGE DOWN TO THE DETAIL OF THE BACKPLATE STYLE AND SIZE.

BACKPLATES

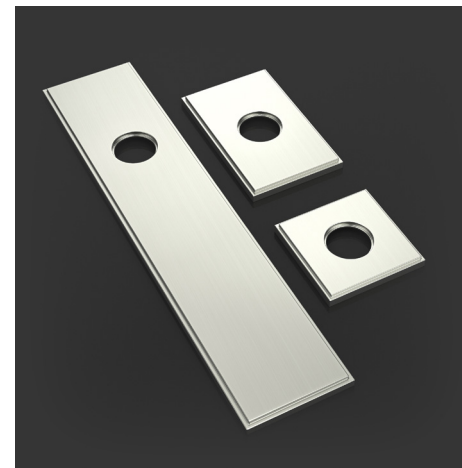
- ALL OF OUR BACKPLATES & ROSES ARE AVAILABLE WITH KEYHOLE, EURO AND TURN & RELEASE CUTOUTS



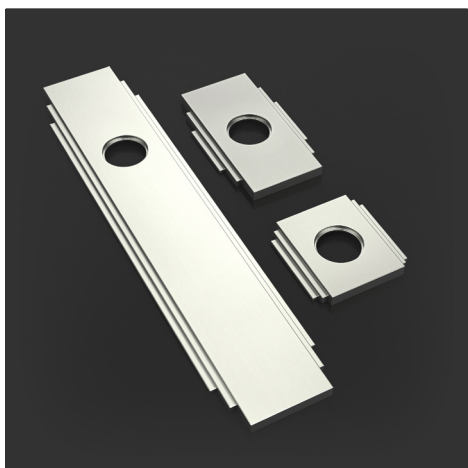
BP.1001
50,100,230,350MM
BESPOKE SIZES AVAILABLE
COMPATIBLE WITH KEYHOLE, EU & T&R



BP.1002
50,100,230,350MM
BESPOKE SIZES AVAILABLE
COMPATIBLE WITH KEYHOLE, EU & T&R



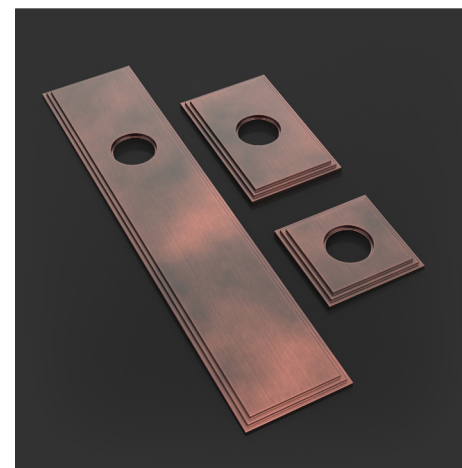
BP.1003
50,100,230,350MM
BESPOKE SIZES AVAILABLE
COMPATIBLE WITH KEYHOLE, EU & T&R



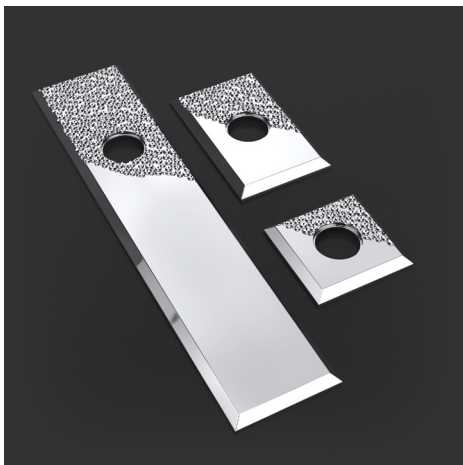
BP.1004
50,100,230,350MM
BESPOKE SIZES AVAILABLE
COMPATIBLE WITH KEYHOLE, EU & T&R



BP.1005
50,100,230,350MM
BESPOKE SIZES AVAILABLE
COMPATIBLE WITH KEYHOLE, EU & T&R
ESTABLISHED 1972



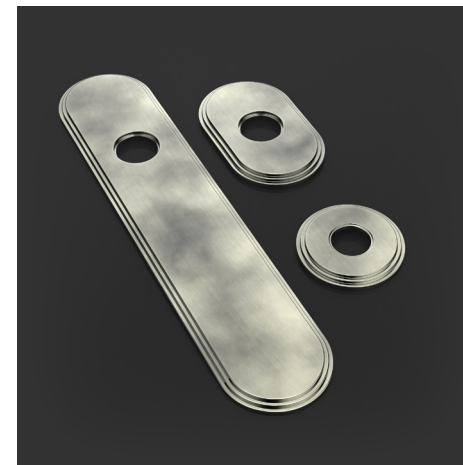
BP.1006
50,100,230,350MM
BESPOKE SIZES AVAILABLE
COMPATIBLE WITH KEYHOLE, EU & T&R



BP.1007
50,100,230,350MM
BESPOKE SIZES AVAILABLE
COMPATIBLE WITH KEYHOLE, EU & T&R



BP.1008
50,100,230,350MM
BESPOKE SIZES AVAILABLE
COMPATIBLE WITH KEYHOLE, EU & T&R



BP.1009
50,100,230,350MM
BESPOKE SIZES AVAILABLE
COMPATIBLE WITH KEYHOLE, EU & T&R



BP.1010
50,100,230,350MM
BESPOKE SIZES AVAILABLE
COMPATIBLE WITH KEYHOLE, EU & T&R



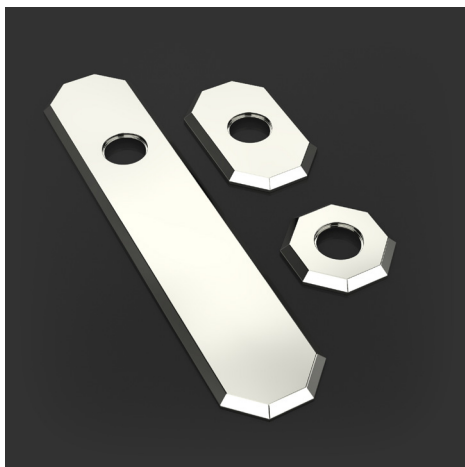
BP.1011
50,100,230,350MM
BESPOKE SIZES AVAILABLE
COMPATIBLE WITH KEYHOLE, EU & T&R



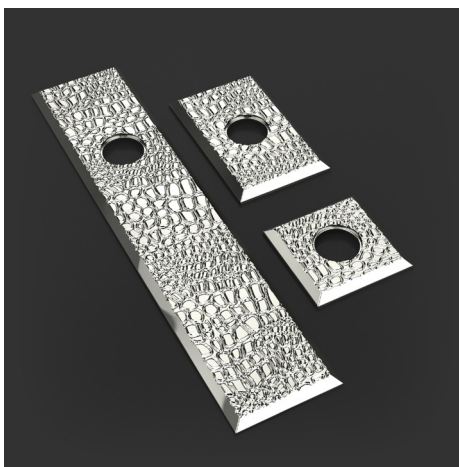
BP.1012
50,100,230,350MM
BESPOKE SIZES AVAILABLE
COMPATIBLE WITH KEYHOLE, EU & T&R

BACKPLATES

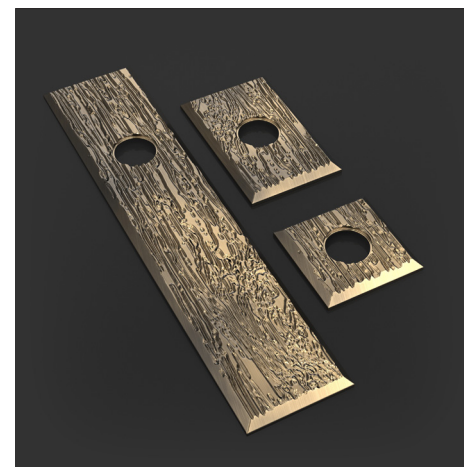
- ALL OF OUR BACKPLATES & ROSES ARE AVAILABLE WITH KEYHOLE, EURO AND TURN & RELEASE CUTOUTS



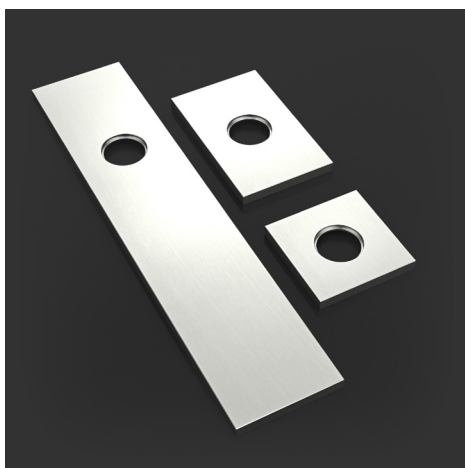
BP.1014
50,100,230,350MM
BESPOKE SIZES AVAILABLE
COMPATIBLE WITH KEYHOLE, EU & T&R



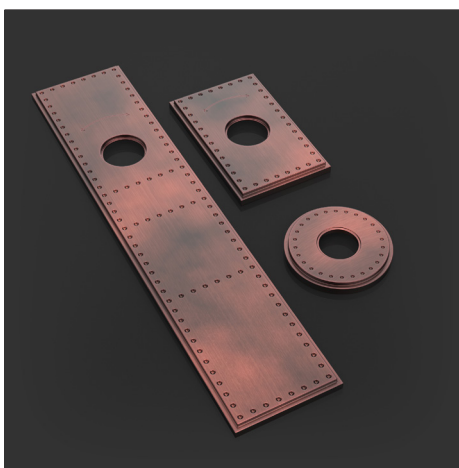
BP.1015
50,100,230,350MM
BESPOKE SIZES AVAILABLE
COMPATIBLE WITH KEYHOLE, EU & T&R



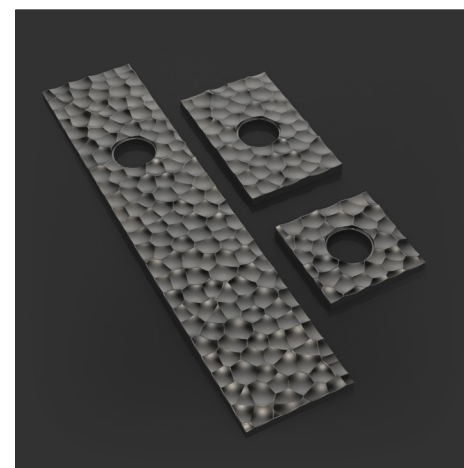
BP.1016
50,100,230,350MM
BESPOKE SIZES AVAILABLE
COMPATIBLE WITH KEYHOLE, EU & T&R



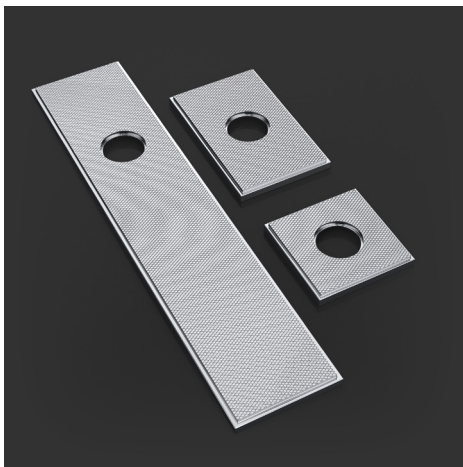
BP.1017
50,100,230,350MM
BESPOKE SIZES AVAILABLE
COMPATIBLE WITH KEYHOLE, EU & T&R



BP.1018
50,100,230,350MM
BESPOKE SIZES AVAILABLE
COMPATIBLE WITH KEYHOLE, EU & T&R
ESTABLISHED 1972



BP.1019
50,100,230,350MM
BESPOKE SIZES AVAILABLE
COMPATIBLE WITH KEYHOLE, EU & T&R

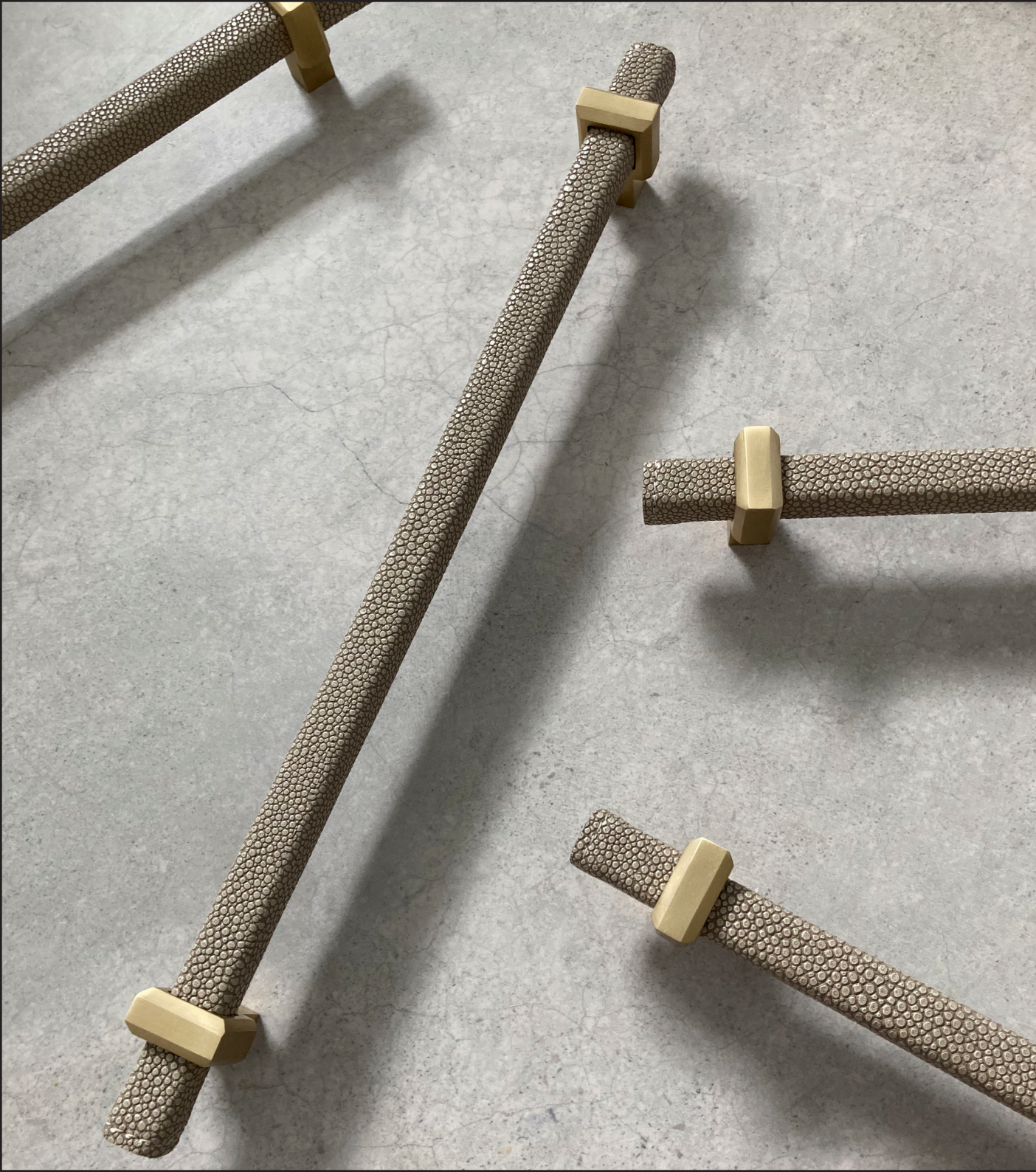


BP.1020
 50,100,230,350MM
 BESPOKE SIZES AVAILABLE
 COMPATIBLE WITH KEYHOLE, EU & T&R



BP.1021
 50,100,230,350MM
 BESPOKE SIZES AVAILABLE
 COMPATIBLE WITH KEYHOLE, EU & T&R





LEATHER, FABRIC & TIMBER

OLIVER KNIGHTS TAKES GREAT PRIDE IN OFFERING A WIDE RANGE OF BESPOKE APPLICATIONS TO OUR CLIENT'S. WE FEEL IT IS IMPORTANT THAT WE CAN ACHIEVE OUR CLIENTS VISION. OLIVER KNIGHTS OFFER THE HIGHEST QUALITY HARDWARE ALONGSIDE THE CAPABILITY OF INCORPORATING THE BEST BRITISH LEATHERS, FABRICS & TIMBER. ALL OF OUR TIMBER & LEATHERS ARE BRITISH MADE AND APPLIED HERE IN THE HEART OF BIRMINGHAM, UK.

LEATHER (L)

OLIVER KNIGHTS OFFERS 8 STANDARD BRITISH LEATHERS, WE ALSO HAVE ACCESS TO OVER 100 DIFFERENT BRITISH MADE LEATHER SHADES AND STYLES THAT ARE AVAILABLE ON REQUEST. IF YOUR CLIENT HAS THEIR OWN LEATHER/FABRIC THIS CAN ALTERNATIVELY BE APPLIED AS A GRIP OR INLAY.

FABRIC (F)

FABRIC CAN ALSO BE INLAYED OR APPLIED AS A GRIP THE SAME AS OUR LEATHER COLLECTION. THIS CAN BE SUPPLIED BY THE CLIENT TO MATCH ANY THEME RUNNING THROUGH OUT THEIR PROJECT OR BE SUPPLIED BY OLIVER KNIGHTS.

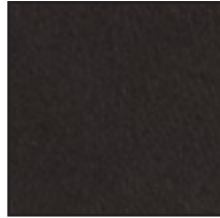
TIMBER (T)

ALL OF OUR TIMBER INSERTS & GRIPS ARE SOURCED FROM A LOCAL TIMBER SUPPLIER IN THE UK. OLIVER KNIGHTS ONLY USE THE HIGHEST QUALITY TIMBER MACHINED AND TREATED LOCALLY. WE OFFER A SELECT RANGE OF TIMBERS ALONG WITH THE OPTION OF BESPOKE SHADES.

LEATHER & FABRIC



BLACK (L)



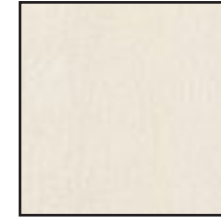
CHOCOLATE (L)



TAN (L)



GREY (L)



CREAM (L)



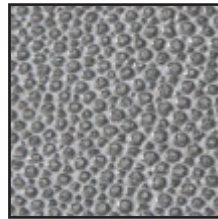
DBLUE (L)



RED (L)



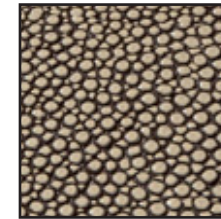
GREEN (L)



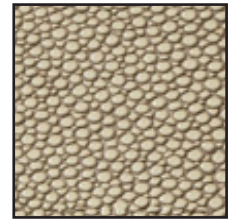
SILGREY F (F)



BEIGE F (F)



GOLD FB (F)

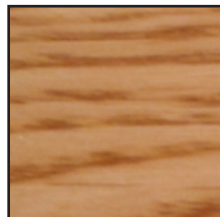


CHAMPAGNE F (F)

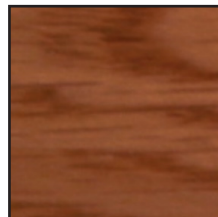
TIMBER



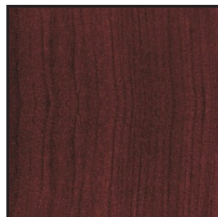
LIGHT (T)



RUSTIC (T)



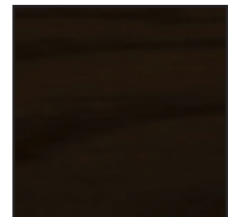
CHERRY (T)



MAHOGONY (T)



CHOCOLATE (T)



DARK (T)



FINISHES

THE FINISHING PROCESS OF A PRODUCT IS ONE OF THE MOST IMPORTANT PROCESSES. OLIVER KNIGHTS HAND FINISHES EVERY PIECE TO GUARANTEE EACH PIECE ACHIEVES THE HIGHEST QUALITY.

LIVING FINISHES

ALL BRASS & BRONZE FINISHES ARE LIVING FINISHES AND ARE TREATED WITH A PROTECTIVE WAX COATING TO ALLOW THE PIECE TO AGE BEAUTIFULLY OVERTIME.

LACQUERED FINISHES

LACQUER FINISHES ARE AVAILABLE ON REQUEST TO PREVENT THE AGING PROCESS OF BRASS, BRONZE AND COPPER FINISHES.

PRECIOUS METAL FINISHES

PRECIOUS METAL FINISHES ARE ALSO AVAILABLE ON REQUEST.

BESPOKE FINISHES

OLIVER KNIGHTS OFFER BESPOKE FINISHES. THIS ALLOWS US TO OFFER OUR CLIENT THE POSSIBILITY OF MATCHING EXISTING FINISHES. IF YOU DO REQUIRE A BESPOKE FINISH, A SAMPLE FINISH SWATCH MUST BE SUPPLIED.

FOR MORE INFORMATION REGARDING FINISHES AND FINISH MAINTENANCE PLEASE CONTACT OLIVER KNIGHTS.

- ALL BRASS & BRONZE FINISHES ARE TREATED WITH A PROTECTIVE WAX AS STANDARD.



POLISHED BRASS



BRUSHED BRASS



AGED BRASS



ANTIQUE BRASS



DARK BRONZE



CHOCOLATE BRONZE



BURNISHED BRONZE



BRUSHED NICKEL



POLISHED NICKEL



BRUSHED CHROME



POLISHED CHROME



BRUSHED COPPER



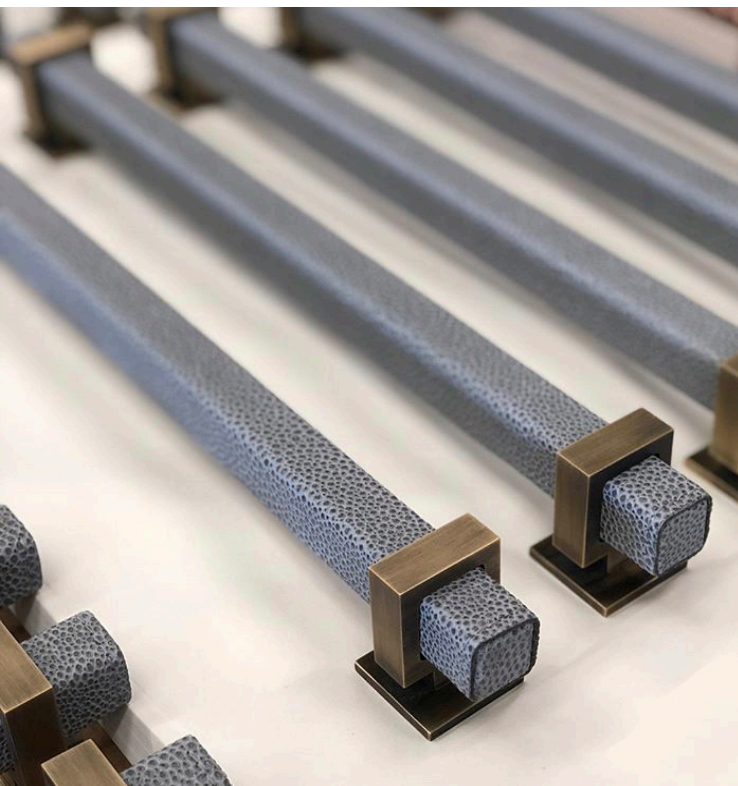
POLISHED COPPER



INDUSTRIAL COPPER



PIANO BLACK



BESPOKE...

OLIVER KNIGHTS ARE WELL KNOWN FOR OUR BESPOKE CONCIERGE. BESPOKE IS THE CORE FOUNDATION OF THE BEGINNING OF OLIVER KNIGHTS. WORKING ALONGSIDE DESIGNERS & ARCHITECTS WE HAVE HELPED RESTORE PERIOD IRONMONGERY AND BRING IDEAS TO LIFE WHILST GAINING AN OUTSTANDING REPUTATION ALONG THE WAY FOR OUR HIGH-QUALITY BRITISH ENGINEERING.

WE OFFER OUR CLIENTS A COMPLETE BESPOKE SOLUTION. WE LOVE NOTHING MORE THAN BRINGING OUR CLIENTS DESIGN IDEAS TO LIFE, CREATING SUPERIOR QUALITY HARDWARE TO SUIT BUILDING FUNCTIONAL NEEDS AND AESTHETICS. OUR IN-HOUSE DESIGN TEAM AND CNC WORKSHOP ALLOWS US TO PROVIDE OUR CLIENTS WITH TECHNICAL DRAWINGS, 3D PRODUCT IMAGERY AND EXACT PRODUCT PROTOTYPES ON A SHORT LEAD TIME. OLIVER KNIGHTS CAN BRING DESIGNS TO LIFE FROM AS LITTLE AS A SKETCH OR AN EXISTING PIECE.

THROUGHOUT THIS BROCHURE, WE HAVE PROVIDED A SMALL INSIGHT OF SOME OF THE BESPOKE ENGINEERING TECHNIQUES AND APPLICATIONS WE CAN INCORPORATE. FOR MORE INFORMATION ON OUR BESPOKE CONCIERGE PLEASE CONTACT OLIVER KNIGHTS.

